

## LICENSE TERMS FOR JACK HENRY/ENTERPRISE PAYMENT SOLUTIONS WHITE LABEL MATERIALS

Jack Henry & Associates, Inc., acting through its ProfitStars division ("JHA"), by providing documentation to you the licensee ("You") for private labeling (the "Materials"), grants a limited license (the "License") to You to publish and distribute the Materials under Your private label, solely in connection with Your promotion, marketing, and support to Your customers of the applicable JHA solutions purchased and/or licensed by You from JHA. Your use of the Materials indicates your acceptance of the terms of this License.

This License does not convey any rights to alter the content of the Materials other than to apply Your private labels.

The Materials covered by this License include only items that are provided to You in a word processing format appropriate for revision; such items do not include files provided in the secured portable document format (PDF). All other documentation and materials provided to You by JHA are not covered by this License and may not be altered or privately labeled by You without JHA's prior written permission.

JHA retains all ownership rights to the Materials, including, but not limited to, in accordance with U.S. Code Title 17—Copyrights. Accordingly, You have no rights with regard to the Materials other than those rights specifically granted to You under this License. Without limiting the generality of the foregoing, JHA reserves the right to:

(a) require You to cease publication, distribution, and use of any Materials that JHA determines in its sole discretion can no longer be used due to content-related issues, including, but not limited to, outdated and inaccurate content;

(b) create new versions of the Materials and require You to replace prior versions of the Materials with the new versions;

(c) create derivatives of, or new versions of, the Materials without Your private labels for publication elsewhere without notifying You or obtaining Your permission; and

(d) monitor Your publication, distribution, and use of the Materials for compliance with the terms of this License, and take any action deemed necessary by JHA in its sole discretion to stop and/or remedy any conduct by You that violates the terms of this License, including, but not limited to, revoking the rights granted herein.

Nothing contained herein shall be construed as creating any agency, legal representative, partnership, or other form of joint enterprise between You and JHA, and neither You nor JHA shall have the authority to contract for or bind the other in any matter.

JHA warrants that it owns all copyright and other proprietary rights to the Materials, that JHA is authorized to grant the rights granted to You under this License. EXCEPT FOR THE FOREGOING WARRANTIES, JHA MAKES NO OTHER REPRESENTATIONS OR WARRANTIES OF ANY KIND, NATURE, OR DESCRIPTION, EXPRESS OR IMPLIED, WITH RESPECT TO THE MATERIALS, INCLUDING, BUT NOT LIMITED TO, ANY WARRANTY OF MERCHANTABILITY OR FITNESS FOR A PARTICULAR PURPOSE, OR AS TO THE RESULTS TO BE OBTAINED BY YOU AS A RESULT OF YOUR USE OF THE MATERIALS IN YOUR BUSINESS, AND JHA HEREBY DISCLAIMS THE SAME.

The terms of this License apply to all Materials in Your possession or control now and in the future.

# Enterprise Payment Solutions (EPS)

JHA EPS SmartPay Business<sup>SM</sup>  
JHA SmartPay Remote Deposit Now<sup>SM</sup>

October 2020



## JHA SmartPay Remote Deposit Now (RDN) Handbook

© 1999 – 2020 Jack Henry & Associates, Inc.

All rights reserved. Information in this document is subject to change without notice. Dates contained in this document are provided as estimates only and can be changed at any time at the sole discretion of Jack Henry & Associates, Inc.

Printed in the United States of America.

No part of this document may be copied, reproduced, stored in a retrieval system, displayed, distributed or transmitted in any form or any means whatsoever (electronic, mechanical or otherwise), including by photocopying or recording for any purpose, without the prior written permission of Jack Henry & Associates, Inc. Making unauthorized copies of this document for any purpose other than your own personal use is a violation of United States copyright laws.

Any unauthorized use of Jack Henry & Associates, Inc.'s, trademarks and service marks is strictly prohibited. A list of registered and unregistered marks owned or licensed by Jack Henry & Associates, Inc. is located at: <https://www.jackhenry.com/more-from-jha/pages/trademark-notice.aspx>

Various other trademarks and service marks used or referenced in this document are the property of their respective owners.

Portions of this software:

The MIT License (MIT)

Copyright (c) 2014-2015 Andrey Gershun (agershun@gmail.com) & Mathias Rangel Wulff (mathiasrw@gmail.com)  
Copyright (c) 2013-2015 The AngularUI Team, Karsten Sperling  
Copyright (c) 2010-2015 Google, Inc. <http://angularjs.org>  
Copyright (c) 2012-2015 the AngularUI Team, <https://github.com/organizations/angular-ui/teams/291112>  
Copyright (c) 2014 philippd  
Copyright © 2015 Philipp Alferov.  
Copyright (c) 2013 danialfarid  
Copyright (c) 2013 Marco Rinck  
Copyright (c) 2013 Mike Grabski  
Copyright (c) 2014 Igor Rafael  
Copyright (c) <2014> <pascal.precht@gmail.com>  
Copyright (C) 2014 lisposter(Leigh Zhu)  
Copyright (c) 2014 Michael Bromley  
Copyright © 2014 Eli Grey.  
Copyright (c) 2011-2015 Twitter, Inc  
Copyright (c) 2008-2014 Pivotal Labs  
Copyright 2005, 2014 jQuery Foundation, Inc. and other contributors  
Copyright (c) 2007 James Newton-King  
Copyright (c) 2009–2015 Modernizr  
Copyright (c) 2011-2015 Tim Wood, Iskren Chernev, Moment.js contributors  
Copyright (c) 2013 FeedbackHound  
Copyright (c) 2015 the AngularUI Team  
Copyright (c) 2009-2014 Jon Rohan, James M. Greene

Permission is hereby granted, free of charge, to any person obtaining a copy of this software and associated documentation files (the "Software"), restriction, including without limitation the rights to use, copy, modify, merge, publish, distribute, sublicense, and/or sell copies of the Software, and to permit persons to whom the Software is furnished to do so, subject to the following conditions:

The above copyright notice and this permission notice shall be included in all copies or substantial portions of the Software.

THE SOFTWARE IS PROVIDED "AS IS", WITHOUT WARRANTY OF ANY KIND, EXPRESS OR IMPLIED, INCLUDING BUT NOT LIMITED TO THE WARRANTIES OF MERCHANTABILITY, FITNESS FOR A PARTICULAR PURPOSE AND INFRINGEMENT. IN NO EVENT SHALL THE AUTHORS OR COPYRIGHT HOLDERS BE LIABLE FOR ANY CLAIM, DAMAGES OR OTHER LIABILITY, WHETHER IN AN ACTION OF CONTRACT, TORT OR OTHERWISE, ARISING FROM, OUT OF OR IN CONNECTION WITH THE SOFTWARE OR THE USE OR OTHER DEALINGS IN THE SOFTWARE.

-----  
BSD License

Copyright (c) 2010 Terence Parr  
PhantomJS  
Copyright (c) 2015, Hibernating Rhinos

All rights reserved. Redistribution and use in source and binary forms, with or without modification, are permitted provided that the following conditions are met:

Redistributions of source code must retain the above copyright notice, this list of conditions and the following disclaimer. Redistributions in binary form must reproduce the above copyright notice, this list of conditions and the following disclaimer in the documentation and/or other materials provided with the distribution. Neither the name of the author nor the names of its contributors may be used to endorse or promote products derived from this software without specific prior written permission.

THIS SOFTWARE IS PROVIDED BY THE COPYRIGHT HOLDERS AND CONTRIBUTORS "AS IS" AND ANY EXPRESS OR IMPLIED WARRANTIES, INCLUDING, BUT NOT LIMITED TO, THE IMPLIED WARRANTIES OF MERCHANTABILITY AND FITNESS FOR A PARTICULAR PURPOSE ARE DISCLAIMED. IN NO EVENT SHALL THE COPYRIGHT OWNER OR CONTRIBUTORS BE LIABLE FOR ANY DIRECT, INDIRECT, INCIDENTAL, SPECIAL, EXEMPLARY, OR CONSEQUENTIAL DAMAGES (INCLUDING, BUT NOT LIMITED TO, PROCUREMENT OF SUBSTITUTE GOODS OR SERVICES; LOSS OF USE, DATA, OR PROFITS; OR BUSINESS INTERRUPTION) HOWEVER CAUSED AND ON ANY THEORY OF LIABILITY, WHETHER IN CONTRACT, STRICT LIABILITY, OR TORT (INCLUDING NEGLIGENCE OR OTHERWISE) ARISING IN ANY WAY OUT OF THE USE OF THIS SOFTWARE, EVEN IF ADVISED OF THE POSSIBILITY OF SUCH DAMAGE.

-----  
Apache License

Copyright (c) 2009-2010 dotless project, <http://www.dotlesscss.com>  
Copyright (C) 2012-2015 SheetJS  
Unity

Version 2.0, January 2004  
<http://www.apache.org/licenses/>

TERMS AND CONDITIONS FOR USE, REPRODUCTION, AND DISTRIBUTION

1. Definitions.

"License" shall mean the terms and conditions for use, reproduction, and distribution as defined by Sections 1 through 9 of this document. "Licensor" shall mean the copyright owner or entity authorized by the copyright owner that is granting the License. "Legal Entity" shall mean the union of the acting entity and all other entities that control, are controlled by, or are under common control with that entity. For the purposes of this definition, "control" means (i) the power, direct or indirect, to cause the direction or management of such entity, whether by contract or otherwise, or (ii) ownership of fifty percent (50%) or more of the outstanding shares, or (iii) beneficial ownership of such entity. "You" (or "Your") shall mean an individual or Legal Entity exercising permissions granted by this License. "Source" form shall mean the preferred form for making modifications, including but not limited to software source code,

documentation source, and configuration files. "Object" form shall mean any form resulting from mechanical transformation or translation of a Source form, including but not limited to compiled object code, generated documentation, and conversions to other media types. "Work" shall mean the work of authorship, whether in Source or Object form, made available under the License, as indicated by a copyright notice that is included in or attached to the work (an example is provided in the Appendix below). "Derivative Works" shall mean any work, whether in Source or Object form, that is based on (or derived from) the Work and for which the editorial revisions, annotations, elaborations, or other modifications represent, as a whole, an original work of authorship. For the purposes of this License, Derivative Works shall not include works that remain separable from, or merely link (or bind by name) to the interfaces of, the Work and Derivative Works thereof. "Contribution" shall mean any work of authorship, including the original version of the Work and any modifications or additions to that Work or Derivative Works thereof, that is intentionally submitted to Licensor for inclusion in the Work by the copyright owner or by an individual or Legal Entity authorized to submit on behalf of the copyright owner. For the purposes of this definition, "submitted" means any form of electronic, verbal, or written communication sent to the Licensor or its representatives, including but not limited to communication on electronic mailing lists, source code control systems, and issue tracking systems that are managed by, or on behalf of, the Licensor for the purpose of discussing and improving the Work, but excluding communication that is conspicuously marked or otherwise designated in writing by the copyright owner as "Not a Contribution." "Contributor" shall mean Licensor and any individual or Legal Entity on behalf of whom a Contribution has been received by Licensor and subsequently incorporated within the Work.

2. Grant of Copyright License. Subject to the terms and conditions of this License, each Contributor hereby grants to You a perpetual, worldwide, non-exclusive, no-charge, royalty-free, irrevocable copyright license to reproduce, prepare Derivative Works of, publicly display, publicly perform, sublicense, and distribute the Work and such Derivative Works in Source or Object form.

3. Grant of Patent License. Subject to the terms and conditions of this License, each Contributor hereby grants to You a perpetual, worldwide, non-exclusive, no-charge, royalty-free, irrevocable (except as stated in this section) patent license to make, have made, use, offer to sell, sell, import, and otherwise transfer the Work, where such license applies only to those patent claims licensable by such Contributor that are necessarily infringed by their Contribution(s) alone or by combination of their Contribution(s) with the Work to which such Contribution(s) was submitted. If You institute patent litigation against any entity (including a cross-claim or counterclaim in a lawsuit) alleging that the Work or a Contribution incorporated within the Work constitutes direct or contributory patent infringement, then any patent licenses granted to You under this License for that Work shall terminate as of the date such litigation is filed.

4. Redistribution. You may reproduce and distribute copies of the Work or Derivative Works thereof in any medium, with or without modifications, and in Source or Object form, provided that You meet the following conditions:

(a) You must give any other recipients of the Work or Derivative Works a copy of this License; and (b) You must cause any modified files to carry prominent notices stating that You changed the files; and (c) You must retain, in the Source form of any Derivative Works that You distribute, all copyright, patent, trademark, and attribution notices from the Source form of the Work, excluding those notices that do not pertain to any part of the Derivative Works; and (d) If the Work includes a "NOTICE" text file as part of its distribution, then any Derivative Works that You distribute must include a readable copy of the attribution notices contained within such NOTICE file, excluding those notices that do not pertain to any part of the Derivative Works, in at least one of the following places: within a NOTICE text file distributed as part of the Derivative Works; within the Source form or documentation, if provided along with the Derivative Works; or, within a display generated by the Derivative Works, if and wherever such third-party notices normally appear. The contents of the NOTICE file are for informational purposes only and do not modify the License. You may add Your own attribution notices within Derivative Works that You distribute, alongside or as an addendum to the NOTICE text from the Work, provided that such additional attribution notices cannot be construed as modifying the License. You may add Your own copyright statement to Your modifications and may provide additional or different license terms and conditions for use, reproduction, or distribution of Your modifications, or for any such Derivative Works as a whole, provided Your use, reproduction, and distribution of the Work otherwise complies with the conditions stated in this License.

5. Submission of Contributions. Unless You explicitly state otherwise, any Contribution intentionally submitted for inclusion in the Work by You to the Licensor shall be under the terms and conditions of this License, without any additional terms or conditions. Notwithstanding the above, nothing herein shall supersede or modify the terms of any separate license agreement you may have executed with Licensor regarding such Contributions.

6. Trademarks. This License does not grant permission to use the trade names, trademarks, service marks, or product names of the Licensor, except as required for reasonable and customary use in describing the origin of the Work and reproducing the content of the NOTICE file.

7. Disclaimer of Warranty. Unless required by applicable law or agreed to in writing, Licensor provides the Work (and each Contributor provides its Contributions) on an "AS IS" BASIS, WITHOUT WARRANTIES OR CONDITIONS OF ANY KIND, either express or implied, including, without limitation, any warranties or conditions of TITLE, NON-INFRINGEMENT, MERCHANTABILITY, or FITNESS FOR A PARTICULAR PURPOSE. You are solely responsible for determining the appropriateness of using or redistributing the Work and assume any risks associated with Your exercise of permissions under this License.

8. Limitation of Liability. In no event and under no legal theory, whether in tort (including negligence), contract, or otherwise, unless required by applicable law (such as deliberate and grossly negligent acts) or agreed to in writing, shall any Contributor be liable to You for damages, including any direct, indirect, special, incidental, or consequential damages of any character arising as a result of this License or out of the use or inability to use the Work (including but not limited to damages for loss of goodwill, work stoppage, computer failure or malfunction, or any and all other commercial damages or losses), even if such Contributor has been advised of the possibility of such damages.

9. Accepting Warranty or Additional Liability. While redistributing the Work or Derivative Works thereof, You may choose to offer, and charge a fee for, acceptance of support, warranty, indemnity, or other liability obligations and/or rights consistent with this License. However, in accepting such obligations, You may act only on Your own behalf and on Your sole responsibility, not on behalf of any other Contributor, and only if You agree to indemnify, defend, and hold each Contributor harmless for any liability incurred by, or claims asserted against, such Contributor by reason of your accepting any such warranty or additional liability.

END OF TERMS AND CONDITIONS

#### MICROSOFT .NET LIBRARY

These license terms are an agreement between Microsoft Corporation (or based on where you live, one of its affiliates) and you. Please read them. They apply to the software named above, which includes the media on which you received it, if any. The terms also apply to any Microsoft updates, supplements, Internet-based services, and support services for this software, unless other terms accompany those items. If so, those terms apply.

BY USING THE SOFTWARE, YOU ACCEPT THESE TERMS. IF YOU DO NOT ACCEPT THEM, DO NOT USE THE SOFTWARE. IF YOU COMPLY WITH THESE LICENSE TERMS, YOU HAVE THE PERPETUAL RIGHTS BELOW.

1. INSTALLATION AND USE RIGHTS. a. Installation and Use. You may install and use any number of copies of the software to design, develop and test your programs. You may modify, copy, distribute or deploy any .js files contained in the software as part of your programs. b. Third Party Programs. The software may include third party programs that Microsoft, not the third party, licenses to you under this agreement. Notices, if any, for the third party program are included for your information only. 2. ADDITIONAL LICENSING REQUIREMENTS AND/OR USE RIGHTS. a. DISTRIBUTABLE CODE. In addition to the .js files described above, the software is comprised of Distributable Code. "Distributable Code" is code that you are permitted to distribute in programs you develop if you comply with the terms below. i. Right to Use and Distribute. You may copy and distribute the object code form of the software. Third Party Distribution. You may permit distributors of your programs to copy and distribute the Distributable Code as part of those programs. ii. Distribution Requirements. For any Distributable Code you distribute, you must use the Distributable Code in your programs and not as a standalone distribution; require distributors and external end users to agree to terms that protect it at least as much as this agreement; display your valid copyright notice on your programs; and indemnify, defend, and hold harmless Microsoft from any claims, including attorneys' fees, related to the distribution or use of your programs. iii. Distribution Restrictions. You may not alter any copyright, trademark or patent notice in the Distributable Code; use Microsoft's trademarks in your programs' names or in a way that suggests your programs come from or are endorsed by Microsoft; include Distributable Code in malicious, deceptive or unlawful programs; or modify or distribute the source code of any Distributable Code so that any part of it becomes subject to an Excluded License. An

Excluded License is one that requires, as a condition of use, modification or distribution, that the code be disclosed or distributed in source code form; or others have the right to modify it. 3. SCOPE OF LICENSE. The software is licensed, not sold. This agreement only gives you some rights to use the software. Microsoft reserves all other rights. Unless applicable law gives you more rights despite this limitation, you may use the software only as expressly permitted in this agreement. In doing so, you must comply with any technical limitations in the software that only allow you to use it in certain ways. You may not work around any technical limitations in the software; reverse engineer, decompile or disassemble the software, except and only to the extent that applicable law expressly permits, despite this limitation; publish the software for others to copy; rent, lease or lend the software; or transfer the software or this agreement to any third party. 4. BACKUP COPY. You may make one backup copy of the software. You may use it only to reinstall the software. 5. DOCUMENTATION. Any person that has valid access to your computer or internal network may copy and use the documentation for your internal, reference purposes. 6. EXPORT RESTRICTIONS. The software is subject to United States export laws and regulations. You must comply with all domestic and international export laws and regulations that apply to the software. These laws include restrictions on destinations, end users and end use. For additional information, see [www.microsoft.com/exporting](http://www.microsoft.com/exporting). 7. SUPPORT SERVICES. Because this software is "as is," we may not provide support services for it. 8. ENTIRE AGREEMENT. This agreement, and the terms for supplements, updates, Internet-based services and support services that you use, are the entire agreement for the software and support services. 9. APPLICABLE LAW. a. United States. If you acquired the software in the United States, Washington state law governs the interpretation of this agreement and applies to claims for breach of it, regardless of conflict of laws principles. The laws of the state where you live govern all other claims, including claims under state consumer protection laws, unfair competition laws, and in tort. b. Outside the United States. If you acquired the software in any other country, the laws of that country apply. 10. LEGAL EFFECT. This agreement describes certain legal rights. You may have other rights under the laws of your country. You may also have rights with respect to the party from whom you acquired the software. This agreement does not change your rights under the laws of your country if the laws of your country do not permit it to do so. 11. DISCLAIMER OF WARRANTY. THE SOFTWARE IS LICENSED "AS-IS." YOU BEAR THE RISK OF USING IT. MICROSOFT GIVES NO EXPRESS WARRANTIES, GUARANTEES OR CONDITIONS. YOU MAY HAVE ADDITIONAL CONSUMER RIGHTS OR STATUTORY GUARANTEES UNDER YOUR LOCAL LAWS WHICH THIS AGREEMENT CANNOT CHANGE. TO THE EXTENT PERMITTED UNDER YOUR LOCAL LAWS, MICROSOFT EXCLUDES THE IMPLIED WARRANTIES OF MERCHANTABILITY, FITNESS FOR A PARTICULAR PURPOSE AND NON-INFRINGEMENT. 12. LIMITATION ON AND EXCLUSION OF REMEDIES AND DAMAGES. YOU CAN RECOVER FROM MICROSOFT AND ITS SUPPLIERS ONLY DIRECT DAMAGES UP TO U.S. \$5.00. YOU CANNOT RECOVER ANY OTHER DAMAGES, INCLUDING CONSEQUENTIAL, LOST PROFITS, SPECIAL, INDIRECT OR INCIDENTAL DAMAGES. This limitation applies to anything related to the software, services, content (including code) on third party Internet sites, or third party programs; and claims for breach of contract, breach of warranty, guarantee or condition, strict liability, negligence, or other tort to the extent permitted by applicable law. It also applies even if Microsoft knew or should have known about the possibility of the damages. The above limitation or exclusion may not apply to you because your country may not allow the exclusion or limitation of incidental, consequential or other damages.

# Contents

- Introduction ..... 1
  - Routes of Access ..... 1
  - User Terminology ..... 1
  - Available Resources ..... 2
  - RDN Process Workflow ..... 2
  - System Requirements ..... 2
    - Installing Microsoft Components for RDN ..... 3
    - Compatibility View Settings ..... 4
    - Trusted Sites ..... 5
    - Downloading the Scanner Drivers ..... 8
  - Session Timeouts ..... 13
- Logging In: Admin User ..... 14
  - Creating a Secret Question ..... 14
    - Updating the Admin Profile ..... 15
  - Adding a User ..... 17
    - Enabling RDN Features for a User Profile ..... 18
    - Troubleshooting Tips ..... 19
    - Updating a User Profile ..... 19
    - Unlocking a User Profile ..... 19
    - Resetting a Password ..... 20
    - Disabling a User Profile ..... 21
    - Deleting a User’s Profile ..... 21
    - Listing Deleted Profiles ..... 22
- RDN: Creating a Deposit ..... 24
  - Editing a Batch ..... 29
    - Editing a Batch Total ..... 32
    - Performing a MICR Repair ..... 33
    - Keying In a Dollar Amount ..... 35
  - Deleting an Item ..... 36
  - Deleting a Batch ..... 37
    - Duplicate Checks ..... 39
  - Submitting a Deposit ..... 40

Reporting .....	46
RDN Application Reporting.....	46
Viewing Deposits .....	46
Printing Images of Items .....	48
Searching for an Item.....	50
Application Reporting .....	53
Transaction Status Summary .....	53
Transaction Status Report .....	56
Editing a Transaction .....	58
Voiding a Transaction .....	60
Resolving a Transaction.....	61
The Reports Page.....	63
Using the Report Builder Utility .....	64
Additional Reports.....	68



# Introduction

The *JHA SmartPay Remote Deposit Now (RDN) Handbook* is a guide to processing transactions through this application. RDN allows you to scan checks from your place of business, perform MICR repairs, and key in the dollar amount of an item. There are reporting options available within the RDN window and the system application to help manage transaction information.

## Routes of Access

To access the RDN application, you must log in to the application with the proper URL and login credentials supplied by the admin user.

Application URL: <https://smartpay.profitstars.com/business>

## User Terminology

Throughout this document, the text will refer to certain parties and their responsibilities in using the application. The following terms will help define “who is who” while performing tasks in the system.

- 1. Admin User** – The admin user is responsible for creating, deleting, enabling, and disabling additional users within your organization. In addition, the Admin user is responsible for the following.
  - Editing, unlocking, and/or deleting a user’s profile
  - Resetting a user’s password to provide a temporary one
  - Assigning specific roles or functions to a user
  - Designating some users as authorized callers
  - Enabling access to any and all accounts (locations) for which a user will be processing deposits
- 2. User** – A merchant/member employee with the ability to support end users. Based on their assigned privileges/roles, users will have the ability to perform the following.
  - Process transactions
  - Generate reports
  - Research historical transactions
  - Edit transactions
  - Contact customer support (if applicable)

---

**NOTE:** Your menu options may differ slightly from those pictured throughout this document.

---

# Available Resources

Please contact your first level of support for more information about the application.

## RDN Process Workflow

The figure below illustrates the process of creating, editing, and submitting an item for deposit. A customer will submit items for deposit. A merchant/member user within your organization will receive the items, make any adjustments where necessary using the RDN application, and submit the deposit for processing.

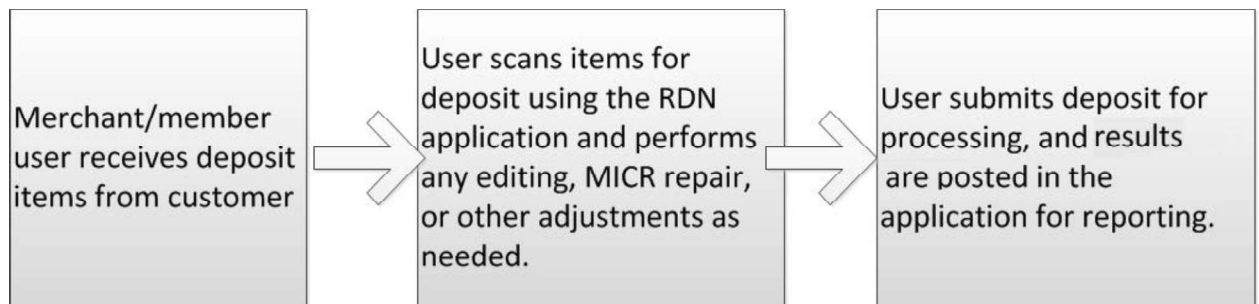


FIGURE 1 - RDN WORKFLOW

## System Requirements

For an optimal experience a high-speed Internet connection is recommended, in addition the following components are required for working with the application(s).

---

**NOTE:** The application does not support Apple® Boot Camp® or any virtualization software.

---

For the PC:

- Local administrative rights
- Local User Profile
- USB port 2.0 or higher
- .NET® Framework 4.7 or higher

For Microsoft® Windows®:

- Windows 8.1: Microsoft Internet Explorer 11 or Google Chrome
- Windows 10: Microsoft Internet Explorer 11 or Google Chrome

---

**NOTE:** The current version of Chrome and its two previous versions are supported.

---

---

**NOTE:** For Google Chrome users, the addition of a ClickOnce extension from the Chrome Web Store is required.

---

The following scanners support this application's features.

Scanner	Model Supported
Panini®	I:Deal® WI: Deal My Vision X Vision X
Digital Check®	CX30 TS230 TS240
Epson®	Capture One TMS 1000
Digital Check SmartSource (Unisys Burroughs®)	SmartSource Professional®
Canon®	imageFORMULA CR-L1 imageFORMULA CR-25 imageFORMULA CR-50 imageFORMULA CR-55 imageFORMULA CR-80 imageFORMULA CR-120 imageFORMULA CR-135 imageFORMULA CR-150 imageFORMULA CR-180 imageFORMULA CR-190

## Installing Microsoft Components for RDN

If you do not already have the following components installed, use the links provided below to download and install the appropriate Microsoft components for use with RDN.

Microsoft .NET Framework 4.7 (Web Installer):

<https://www.microsoft.com/en-us/download/details.aspx?id=55170>

Local administrator rights are required to install .NET updates.

---

**NOTE:** The Microsoft Report Viewer 2008 Service Pack 1 has been integrated into the above installer. A separate download for the report viewer is no longer necessary.

---

## Compatibility View Settings

1. From your internet browser, select **Tools | Compatibility View Settings**.

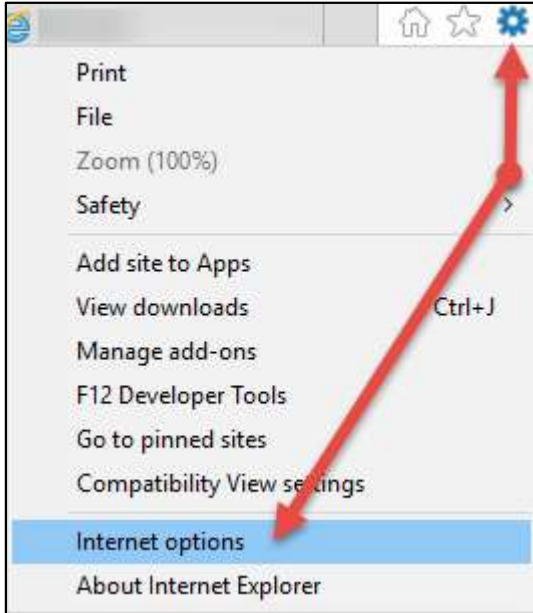


FIGURE 2 - COMPATIBILITY VIEW SETTINGS OPTION

2. The *Compatibility View Settings* window appears. In the *Add this website* field provided, enter the URL: <https://www.remotedepositnow.com> and then select **Add** (shown below).

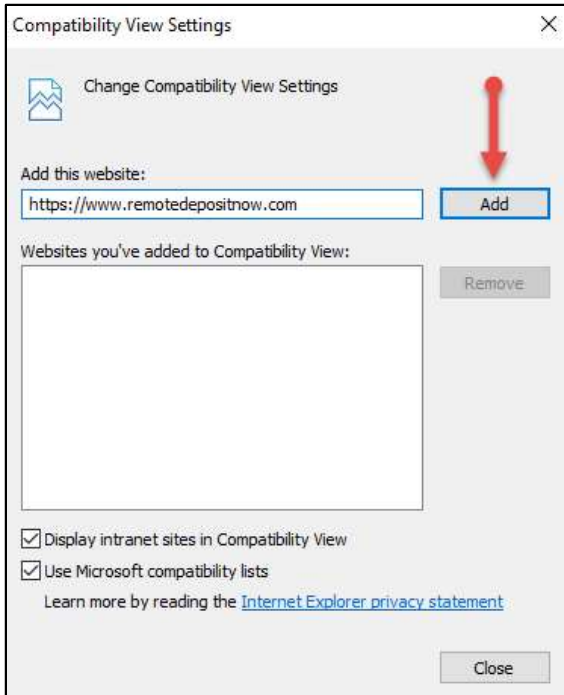


FIGURE 3 - COMPATIBILITY VIEW SETTINGS FOR RDN

3. Select **Close** to close the window.

## Trusted Sites

A user will need to ensure that the application URL is added to the *Trusted Sites* option in *Internet Settings*. Use the following steps to add the website to your Trusted Sites.

1. Open *Control Panel* from your *Start Menu*. Select **Internet Options**. Note: You may need to select **Network and Internet** and then **Internet Options**.

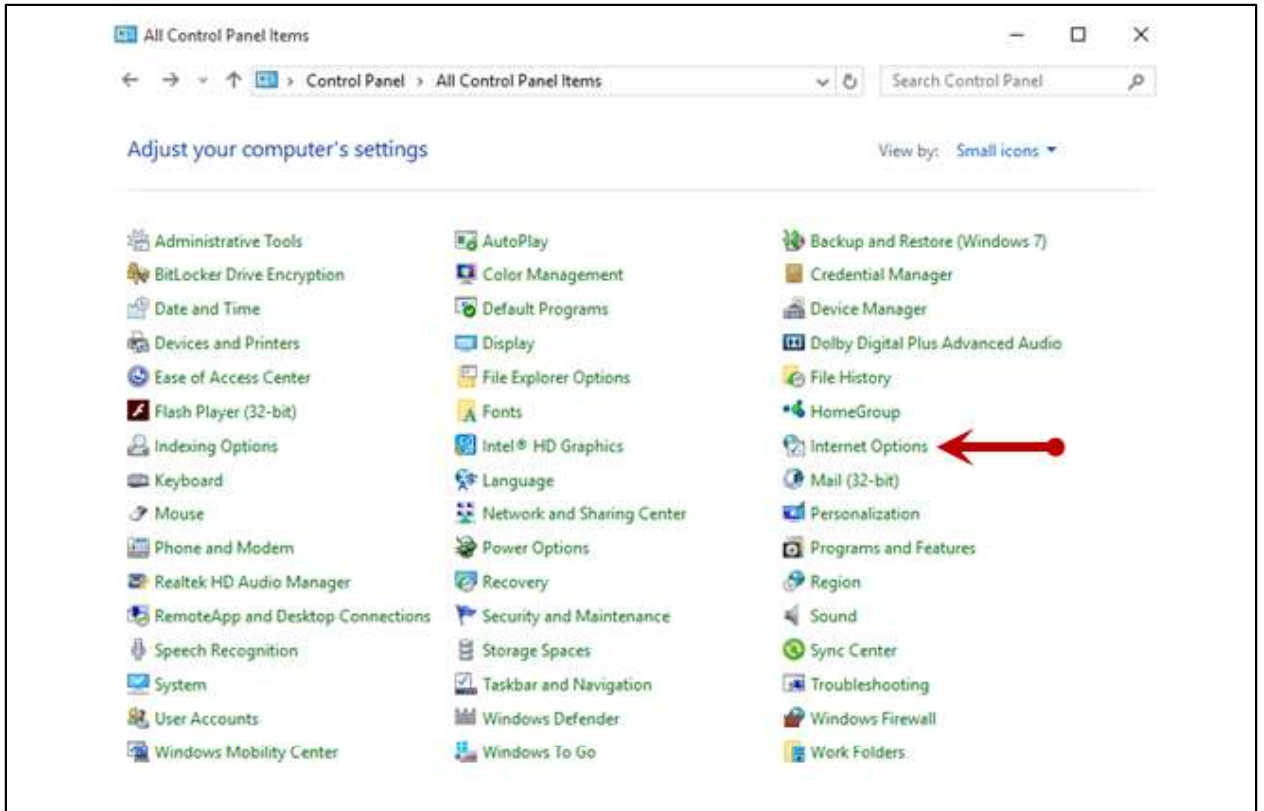


FIGURE 4 – CONTROL PANEL

- From the tabs at the top of the *Internet Options* window, select **Security**.



FIGURE 5 - SECURITY TAB UNDER INTERNET OPTIONS

- Select the **Trusted sites** icon to activate the **Sites** option. Select **Sites**.

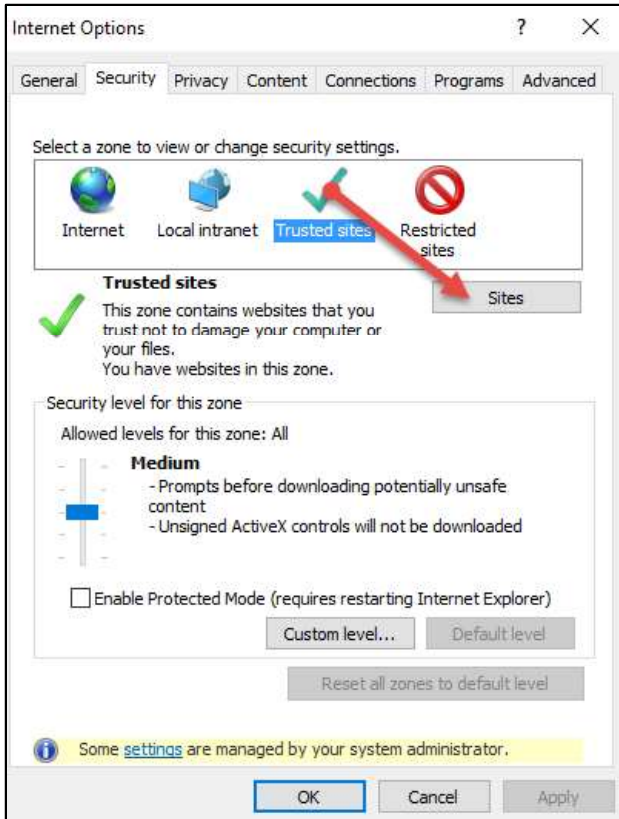


FIGURE 6 - SITES OPTION UNDER TRUSTED SITES CATEGORY

4. The *Trusted Sites* window appears. In the *Add this website to the zone* field, enter the URL <https://www.remotedepositnow.com> and <https://smartpay.profitstars.com> and then select **Add**.

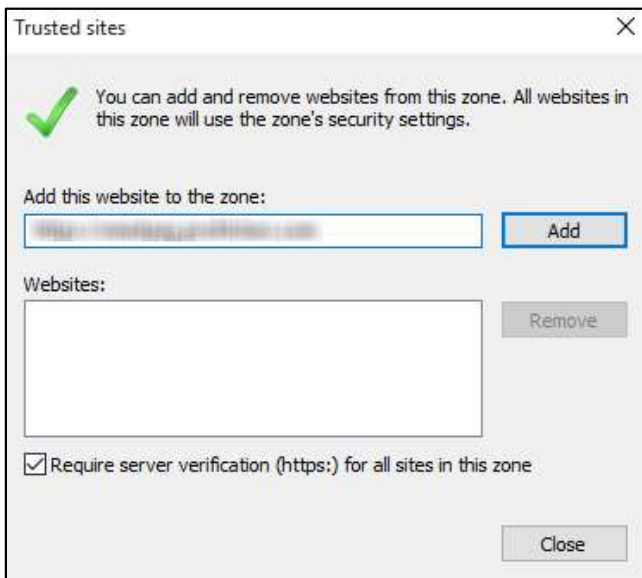


FIGURE 7 - ADDING A TRUSTED SITE

5. Select **Close** at the bottom of the *Trusted sites* window.
6. Select **OK** from the bottom of the *Internet Options* window.

## Downloading the Scanner Drivers

Utilizing RDN requires the use of scanner drivers provided by EPS. You should receive a URL where you may download your scanner drivers for the RDN product. Install your scanner drivers prior to logging in and using the RDN application.

1. Open a browser session, and enter the URL address: <https://www.remotedepositnow.com> Select the type of scanner you will be utilizing from the drop-down box and then select the **Go** option. **Do not plug the USB cable from the scanner into your computer at this time.**



FIGURE 8 - REMOTE DEPOSIT NOW PAGE

2. A file download security warning may display. Select **Run**.



FIGURE 9 - SECURITY WARNING FOR INTERNET EXPLORER



FIGURE 10 - SECURITY WARNING FOR CHROME

3. Depending on the type of scanner you are installing a driver for, you may receive the following adapter setup message. Click **Next** to continue.



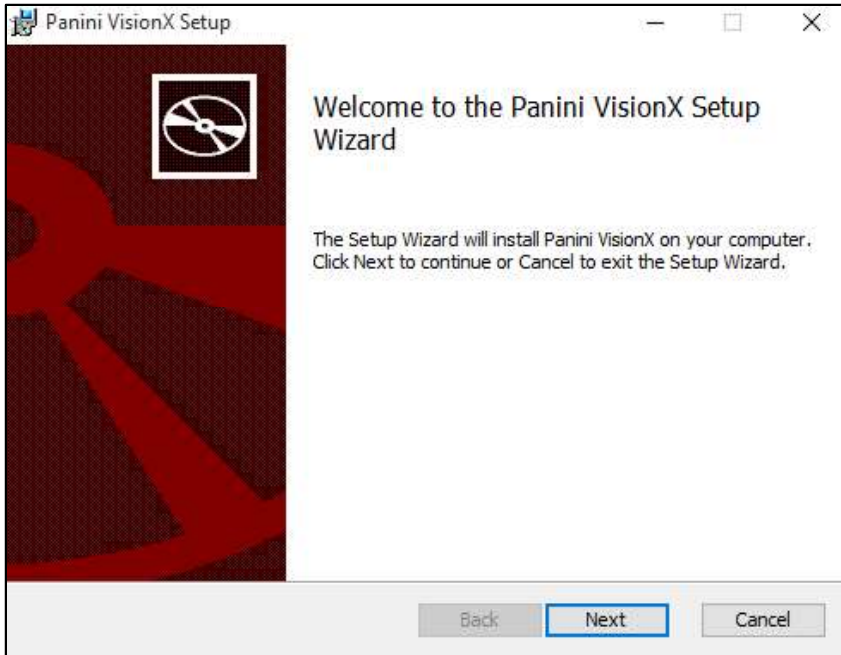


FIGURE 11 - ADAPTER SETUP PAGE

4. Another adapter setup screen may display information about designating a folder for the adapter. Select **Next** to continue.

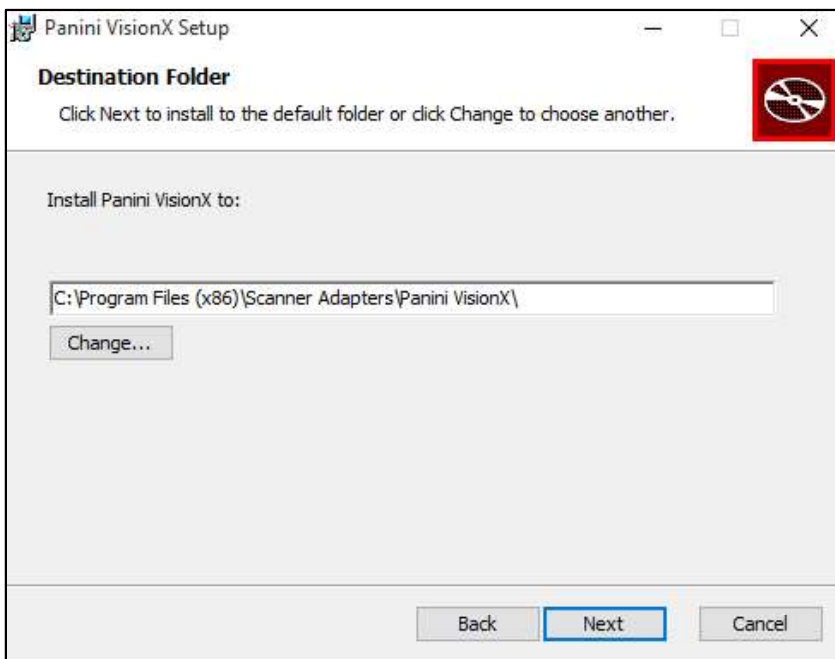


FIGURE 12 - DESIGNATED FOLDER FOR ADAPTER SETUP

5. An installation prompt appears. Select **Next** to continue.

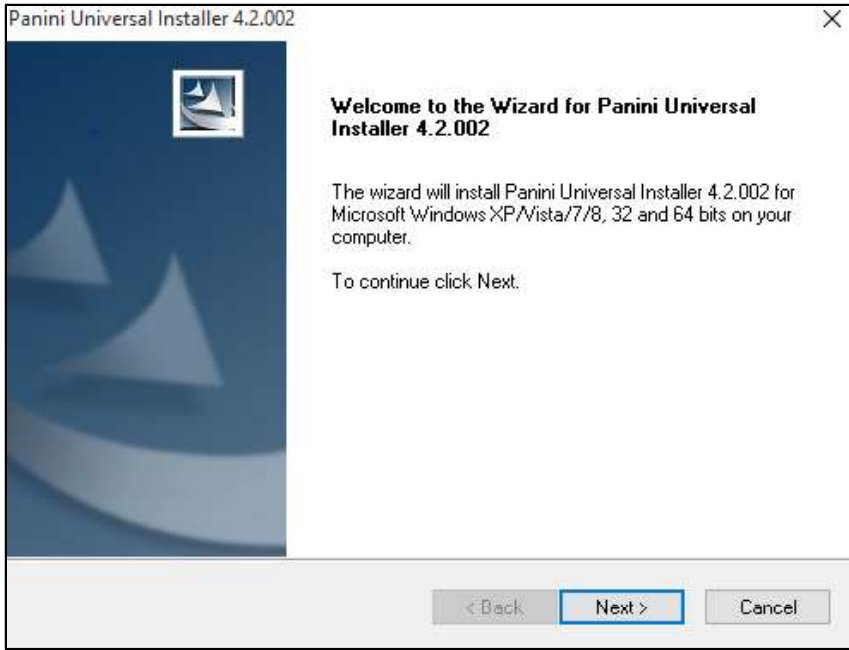


FIGURE 13 - INSTALLATION PROMPT

- 6. An *End User License Agreement* appears. Select the **I accept the terms in the License Agreement** check box, and then select **Next**.

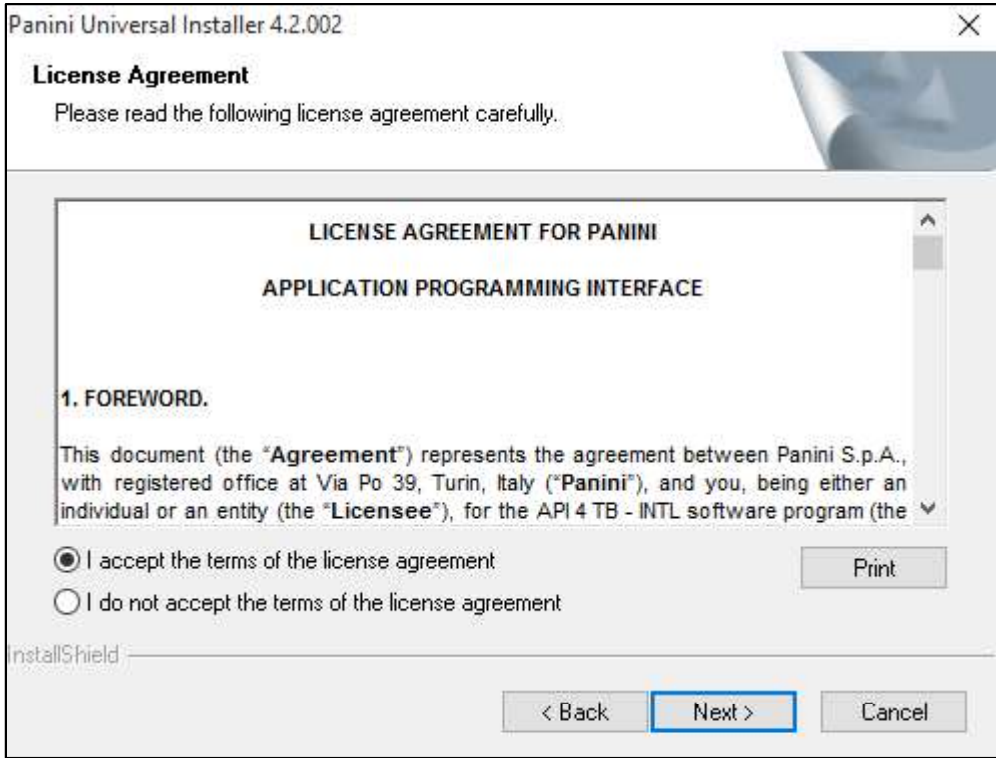


FIGURE 14 – LICENSE AGREEMENT

7. A location prompt appears asking to confirm a location where the setup files will install on your computer. Select **Browse** to designate a location other than the one provided. Click **Next** to continue.

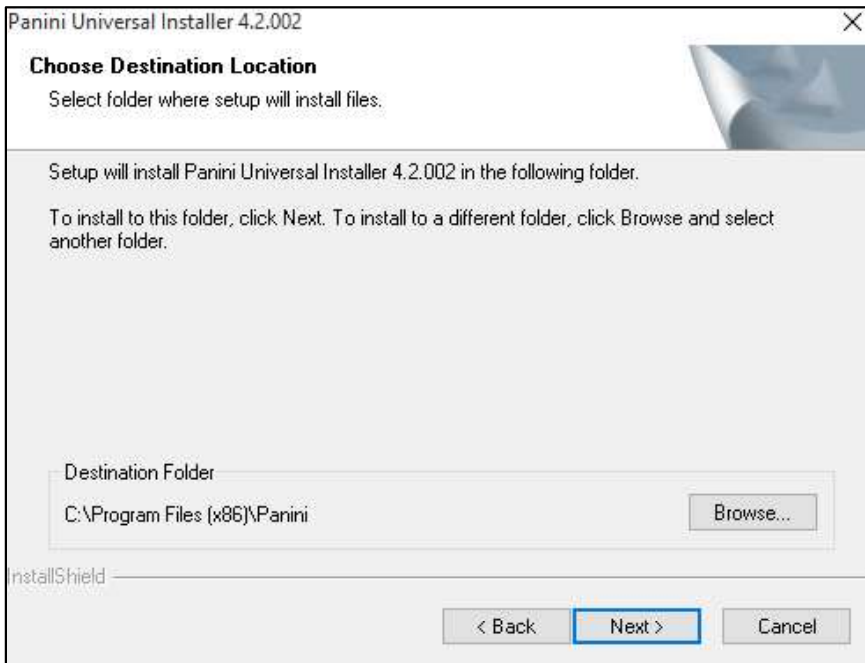


FIGURE 15 - LOCATION DESIGNATION FOR INSTALLATION FILES

8. A prompt appears for the features that will be installed. Select **Next** to continue.

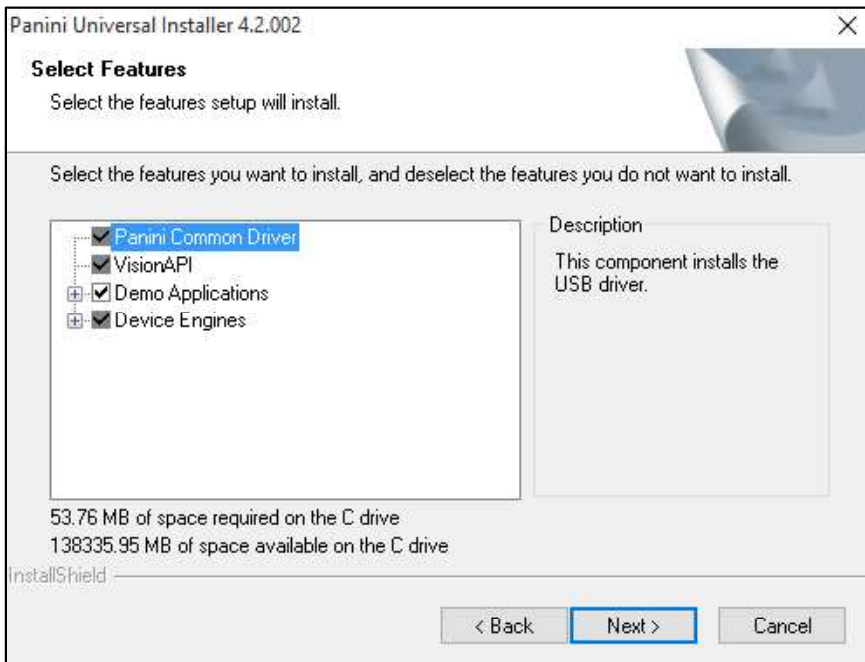


FIGURE 16 - SELECT FEATURES TO BE INSTALLED

9. A confirmation for completing the software installation appears. Click **Finish**.

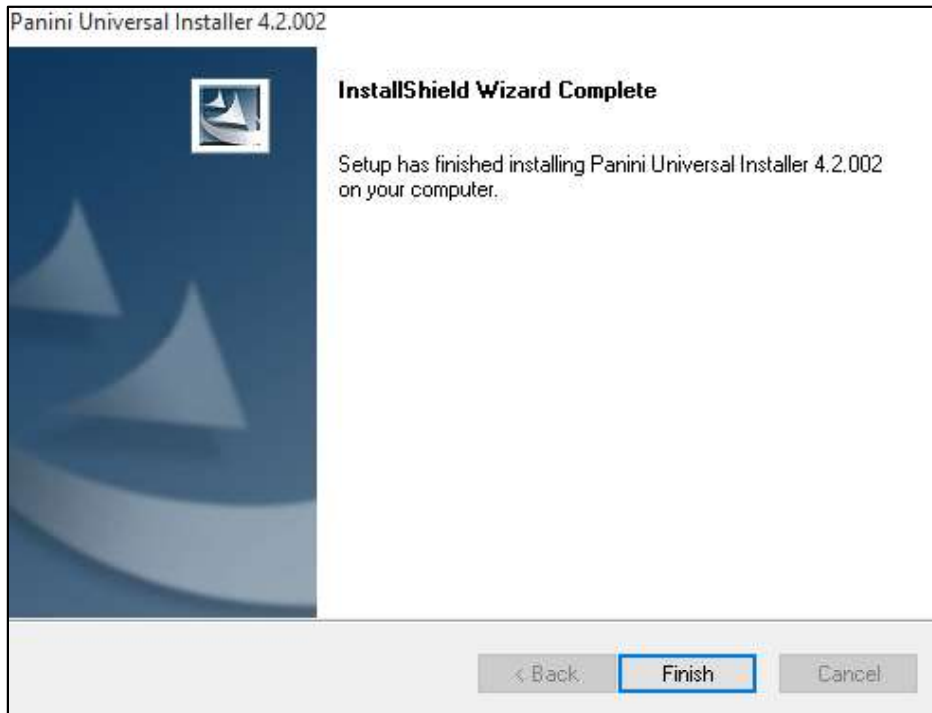


FIGURE 17 – FINISH INSTALLING PROMPT

10. A confirmation for completing the adapter setup appears. Click **Finish**.

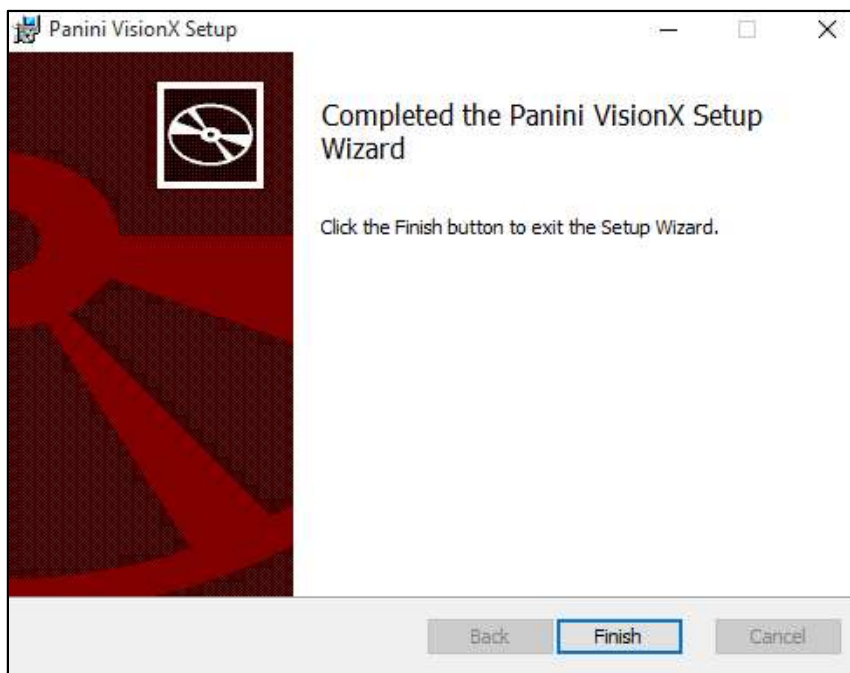


FIGURE 18 – FINISH ADAPTER PROMPT

11. The scanner driver installation process is complete. Wait for the scanner to load—a pop-up may indicate the device is ready to use. You may now plug the USB cable from the scanner into the computer and log in to RDN through the system application.

## Session Timeouts

The system will automatically log off a user who has been inactive for at least 30 minutes. A *Session Timeout Warning* appears two minutes before the user is set to be logged out to give them an opportunity to remain logged in. Click anywhere in the application to remain logged in.

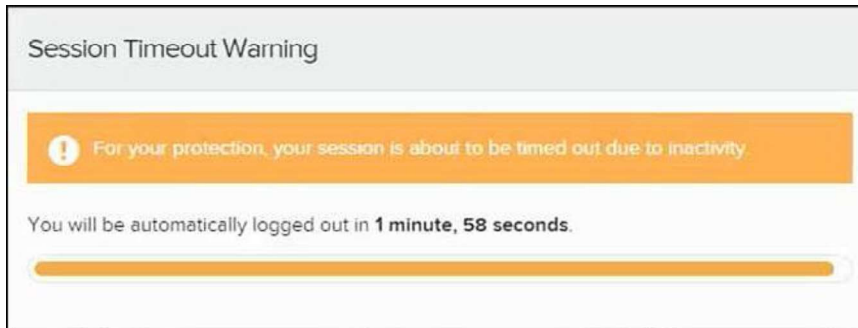


FIGURE 19 - SESSION TIMEOUT WARNING

# Logging In: Admin User

You will be provided with your site's URL address, the admin username, a temporary password, and a company name that must be entered upon first logging in to the application. Save the URL for future use, as it is a route of access into the system.

1. Once at the provided URL address, complete the **User Name**, **Password**, and **Company** fields. Click **Login**.
2. The system will prompt you to change your password. Passwords expire every 90 days and are case-sensitive. Use the following guidelines when creating a new password:
  - At least 1 uppercase letter
  - At least 1 lowercase letter
  - At least 1 number
  - 8-50 characters in length
3. Click **Update Password**.

---

**NOTE:** If you forget your password, you have the option to request a new one, as long as your current email address is in your user profile. Your administrator can update your user profile.

---

## Creating a Secret Question

A secret question is a tool used when you forget your password and can have another temporary password generated and sent to an email address. Without an email address in a user's profile, that user will not be able to answer a secret question for a new password for access into the system. The merchant admin will need to manually edit/enter an email address for each merchant user, so that the merchant user has the option to request a new password by answering a secret question in the application. Secret questions do not need to be a complete question or contain a question mark. Secret questions and answer are not case-sensitive fields.

Once an admin has entered an email address for the merchant user profile, use the following steps to configure the secret question that will be asked of the user, before a new password can be generated and sent to the applicable email address. If the secret question is answered correctly, you will receive an email with a new temporary password.

---

**NOTE:** Single-sign on users will not need to establish a secret question.

---

1. Log in to the application, and select **User menu | My Settings**.

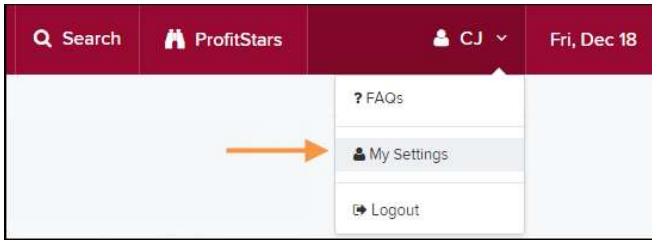


FIGURE 20 - MY SETTINGS

2. The system will prompt you for your current login password in order to reach the *My Settings* page. Once there, make changes to the *Change Password*, *Create/Update Secret Question and Answer*, and/or *Create/Update Authorized Caller Identification Phrase and Response* sections, as needed. Select **Update** when finished.

FIGURE 21 - MY SETTINGS PAGE

## Updating the Admin Profile

As an admin user, you will need to update your profile with an email address where a new temporary password can be sent, if needed. A secret question will also need to be set up as a security measure for creating new passwords.

1. Log in to the system, and select **Admin | Users** from the left main menu.

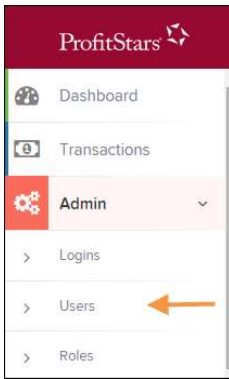


FIGURE 22 - ADMIN TAB

2. Select the **Edit** icon for the user profile to be updated (in this case, the admin).

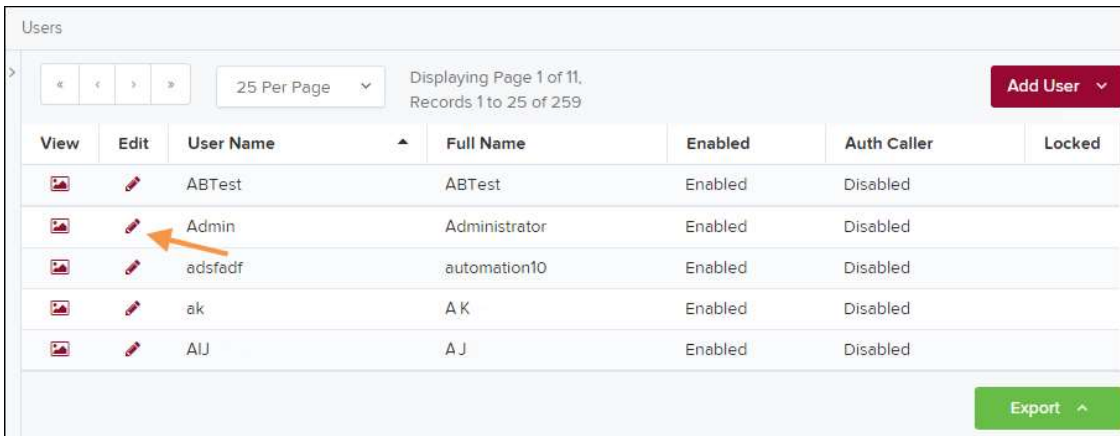


FIGURE 23 - EDIT USER OPTION

3. Change any of the *Update User Settings, Privileges for this User, Roles, and Locations for this User* sections available for the user. Note that the **Email Address** field is in the *Update User Settings* section. Select **Update** to save all changes.

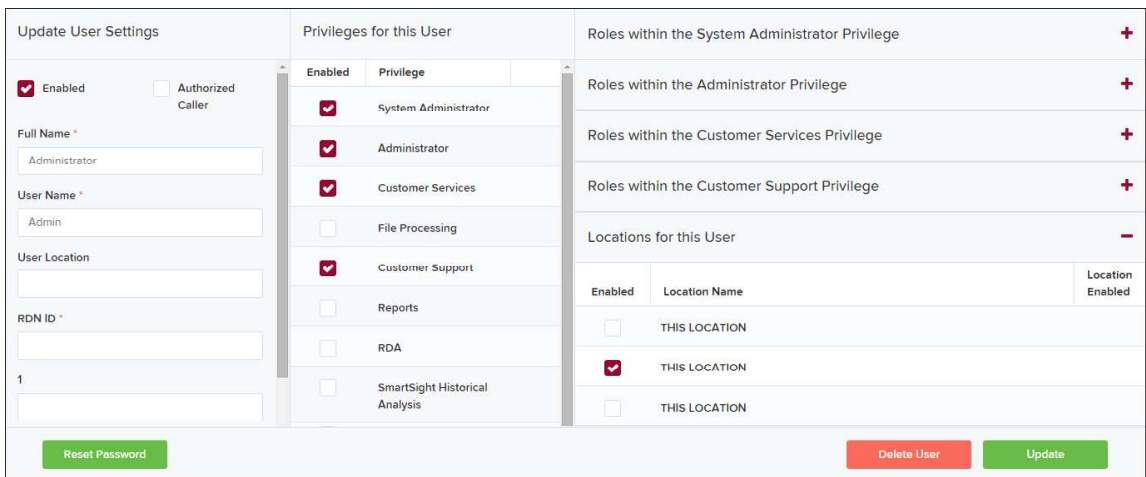


FIGURE 24 - EMAIL ADDRESS UNDER USER SETTINGS



# Adding a User

Admin users are responsible for creating user profiles for those completing tasks with the application on a daily basis. The admin user is also responsible for updating user profiles, providing new passwords, unlocking users in the event they become locked out of the system, and deleting a user's profile if necessary. If you are the administrator and will be scanning checks or running reports, make sure to create a separate user profile for yourself. All individuals who will be scanning checks or running reports will need a user profile.

1. Log in, and select **Admin | Users** from the left main menu.
2. Select **Add User** and then choose **Business User**.



FIGURE 25 - ADD USER OPTION

3. Fill in the following required fields.
  - **Full Name** – The first and last name of the user.
  - **User Name** – The user's login name. This field is not case-sensitive.
  - **RDN ID** – This field will create the RDN user on the backend. It can be the same as the profile user name. To avoid duplication of the user profiles, do not update this field after the original setup.
  - **Email Address** – The email address of the user.

Non-required fields:

- **User Location** – Optional informational field to describe the user.
  - **Auto Disable** – This field is not used currently.
  - **Dual Auth Amount** – This field is not used currently.
  - **Dual Auth Status** – This field is not used currently.
4. Fill out the additional *Add User Settings* and the *Privileges for this User* sections. Note that a **Temporary Password** is displayed at the bottom of the page—provide this password to the user you are creating.
    - a. Select the **Authorized Caller** check box if this user will contact EPS for support, if necessary. Once enabled, the user will then be required to establish an **Authorized Caller Identification Phrase** that will be used by the EPS Customer Support representative to verify that the user is authorized before providing support. Callers who are not able to answer their identification phrase, or are not an authorized user will be directed to their financial institution for further assistance.

- b. Once you have selected privileges to provide to this user, select **Add**. The system will create the user and allow you to select roles underneath each of the privileges assigned to them.
5. Under *Roles within the Customer Service* privilege, select the *Accounting* role for the user to run reports in the application. Select the *Remote Deposit Now* role for the user to scan checks to submit for deposit using RDN.
6. Select the appropriate check boxes under *Locations for this User* for which the user will scan checks.

The screenshot shows the 'Update User Settings' page with three main sections:

- Update User Settings:** Includes checkboxes for 'Enabled' and 'Authorized Caller', and input fields for 'Full Name', 'User Name', 'User Identification', and 'Email Address'. A 'Reset Password' button is at the bottom.
- Privileges for this User:** A table with columns 'Enabled' and 'Privilege'.
 

Enabled	Privilege
<input checked="" type="checkbox"/>	Administrator
<input checked="" type="checkbox"/>	Customer Services
<input type="checkbox"/>	File Processing
<input checked="" type="checkbox"/>	Customer Support
- Roles within the Administrator Privilege:** A list of roles with expand/collapse icons (+/-).
  - Roles within the Customer Services Privilege (+)
  - Roles within the Customer Support Privilege (+)
- Locations for this User:** A table with columns 'Enabled', 'Location Name', and 'Location Enabled'.
 

Enabled	Location Name	Location Enabled
<input checked="" type="checkbox"/>	AA CPP Location 1	<input checked="" type="checkbox"/>
<input checked="" type="checkbox"/>	AA CPP Location 2	<input checked="" type="checkbox"/>
<input checked="" type="checkbox"/>	ANOTHER TEST LOCATION	<input checked="" type="checkbox"/>

Buttons for 'Delete User' and 'Update' are located at the bottom right.

FIGURE 26 - SELECTING ROLES AND LOCATIONS FOR A USER

7. Select **Update** at the bottom of the page.

## Enabling RDN Features for a User Profile

To specify the permissions this user will have with RDN, select the check box next to the *Enable RDN* option on the *Update User Settings* page, and select **Update** at the bottom of the page. The page refreshes, and the various permissions to give a user profile appear.

1. Select which permissions the user will need from the options displayed.
  - **Admin Permission** – Separate from the account administrator role. This role is required to access the **Tools** tab, which allows the user to delete an existing batch.
  - **Receive Alert Emails** – Allows the user to receive deposit alert emails upon deposit.
  - **Scan Items** – Allows the user to scan items through RDN.
  - **View Deposits** – Allows the user to view deposits in RDN.
  - **Export Deposits** – Allows the user to export items.
  - **Receive Activation Emails** – Not applicable, do not check this box.
  - **Create Deposits** – Check this box to allow the user to make deposits to EPS.
  - **Edit Items** – Check this box to allow the user to be able to modify/fix their batches in RDN.

- **Search** – This allows the user to be able to perform searches in RDN on the *Search* page.
  - **View Notifications** – This allows the user to view any deposit messages coming from EPS, such as exceeded transaction limits.
2. Make any other changes to this profile, and select **Update** at the bottom of the page to finish and save changes.

---

**NOTE:** If you wish to add more users at this time, select **List Users** from the left navigational bar before selecting the **Add Users** option, again. This step will need to be taken for each new profile you create.

---

## Troubleshooting Tips

There are instances that may generate duplicate RDN alert emails. See below for two examples and ways to avoid those situations.

**Duplicated email addresses** – For every instance of the same email address that is entered into the merchant user’s profiles in SmartPay Business, the application will send an email. For example using the same email address for both the Admin profile and the merchant user will cause two identical emails to be sent to that address.

**Updating the RDN ID** – When the original RDN ID is created in the user profile, the application creates an RDN profile on the backend. If the RDN ID is changed after the initial setup, another RDN profile that is not visible to the customer will be created. This new RDN profile will contain the same information as the original profile, including the email address. This will result in multiple emails sent to the same address. To avoid this, do not make changes to the RDN ID.

## Updating a User Profile

As the admin user, you also have the responsibility of enabling/disabling users, deleting a user, resetting a user’s password, editing/updating user profiles, and designating authorized callers.

1. Log in and select **Admin | Users** from the left main menu.
2. Select the **Edit** icon for the user profile to be updated (in this case, a user).
3. The *Update User Settings* page displays. Make any changes necessary.
4. Click **Update** at the bottom of the page.

## Unlocking a User Profile

Users can be locked out of the system for keying their password incorrectly five times, or answering the secret question incorrectly when requesting a new temporary password.

As the admin user, you are responsible for unlocking an employee’s profile. If an admin user is locked out, contact your first line of support for assistance. Follow the steps below to unlock a user’s profile.

1. Log in and select **Admin | Users** from the left main menu.

- Under the *Locked* column, select the **Unlock** option for that user. The *Unlock* will disappear, and the user profile will be unlocked.

View	Edit	User Name	Full Name	Enabled	Auth Caller	Locked
		admin	Administrator	Enabled	Disabled	
		Jamie	Jamie S	Enabled	Enabled	
		Jennie	Jennie E	Enabled	Disabled	
		Lucy	Lucy E	Enabled	Disabled	
		smith	S Smith	Enabled	Disabled	

FIGURE 27 - UNLOCK OPTION

---

**NOTE:** If the user needs a new password, you will need to reset the password (detailed below).

---

## Resetting a Password

Users may forget their password and ask you to provide them with a new, temporary one. The steps below explain how to reset a user's password.

- Log in and select **Admin | Users** from the left main menu.
- Select **Edit** for the user profile to update.
- Select **Reset Password** button from the bottom of the page. The user's profile will have a case-sensitive temporary password generated. Carefully record this password and provide it to the user.

Users / Edit User

Update User Settings

Enabled  Authorized Caller

Full Name \*

User Name \*

User Location

Cash Management ID \*

Email Address

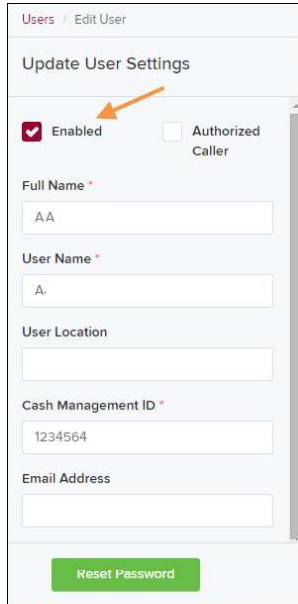
[Reset Password](#)

FIGURE 28 - RESET PASSWORD BUTTON

## Disabling a User Profile

Disabling a user keeps the profile intact until access is re-enabled by the admin user. The admin may want to disable a user if a user is on leave for an extended period of time before working with the application again.

1. Log in to the system, and select **Admin | Users** from the left main menu.
2. Select **Edit** for the user profile you wish to disable.
3. Uncheck the **Enabled** box in the *Update User Settings* section.



The screenshot shows a web interface for editing a user profile. At the top, it says 'Users / Edit User'. Below that is the title 'Update User Settings'. There are two checkboxes: 'Enabled' which is checked with a red square, and 'Authorized Caller' which is unchecked. Below these are several text input fields: 'Full Name' containing 'AA', 'User Name' containing 'A', 'User Location' (empty), 'Cash Management ID' containing '1234564', and 'Email Address' (empty). At the bottom of the form is a green button labeled 'Reset Password'. An orange arrow points to the 'Enabled' checkbox.

FIGURE 29 – UNCHECK THE ENABLED OPTION

4. Select **Update** to save all changes.

## Deleting a User's Profile

Deleting a user profile will remove it from the list of users and make it inaccessible. The *User Name* for that profile cannot be utilized again for a different user. The profile will be categorized as a deleted user.

To delete an admin, you must first remove the *Administrator* role from the user's profile before completing the following steps.

1. Log in to the system and select **Admin | Users** from the left main menu.
2. Select **Edit** for the user profile to delete.
3. Select **Delete User**, as shown below.

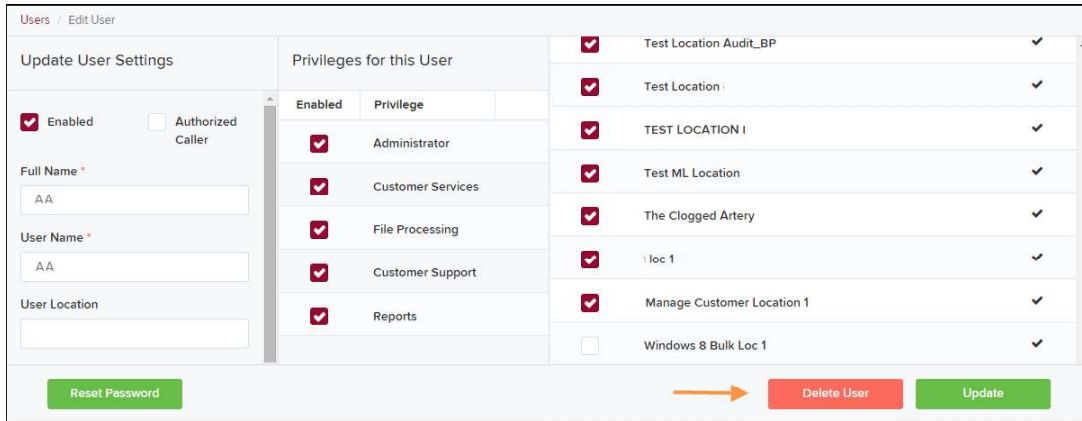


FIGURE 30 - DELETE USER OPTION

4. A prompt will ask you to confirm deleting the user. Select **Yes**.



FIGURE 31 - DELETE USER CONFIRMATION

## Listing Deleted Profiles

A list of the user profiles that you have deleted is available if you need to refer back to a previous user's profile information. This list will also provide the profile's audit history and any updates that may have been made to it.

1. Log in and select **Admin | Users** from the left main menu.
2. In the *Merchant Users* section, select the **Deleted Users** option under *Filters*. The list of users will automatically update to display only deleted users.
  - a. Select **Clear Filters** to strip any filters from the list of users.

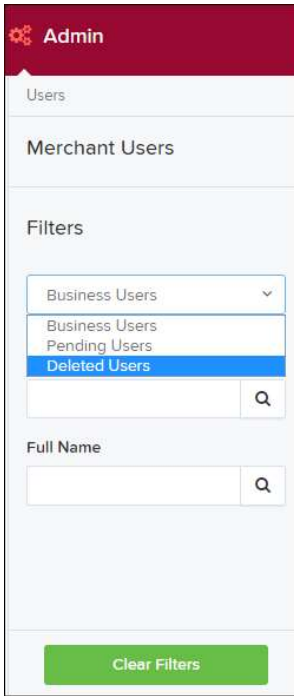


FIGURE 32 - DELETED USERS FILTER

# RDN: Creating a Deposit

---

**NOTE:** If the USB cable from the scanner is not connected to your computer, connect it at this time.

---

1. Log in, and select **Transactions** from the left main menu.

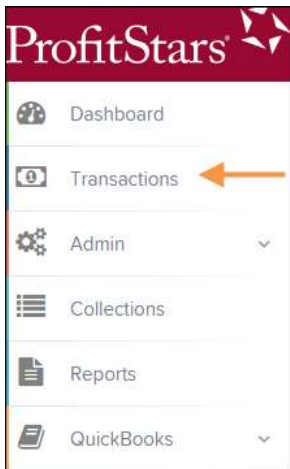


FIGURE 33 - TRANSACTIONS TAB

2. Under Check Processing, choose **Remote Deposit Now**. The RDN application will initiate.

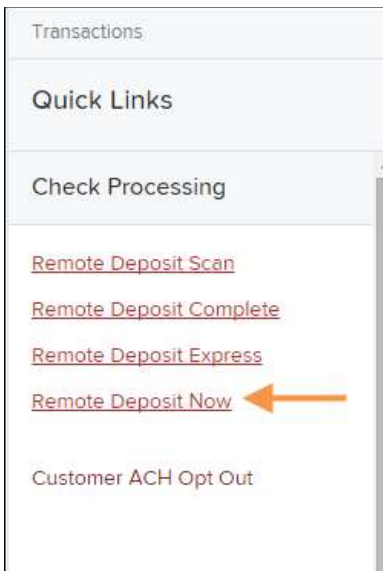


FIGURE 34 - REMOTE DEPOSIT NOW LINK

3. If this is the first time using the RDN application, an *Application Run Security Warning* may appear. Select **Run** to continue.



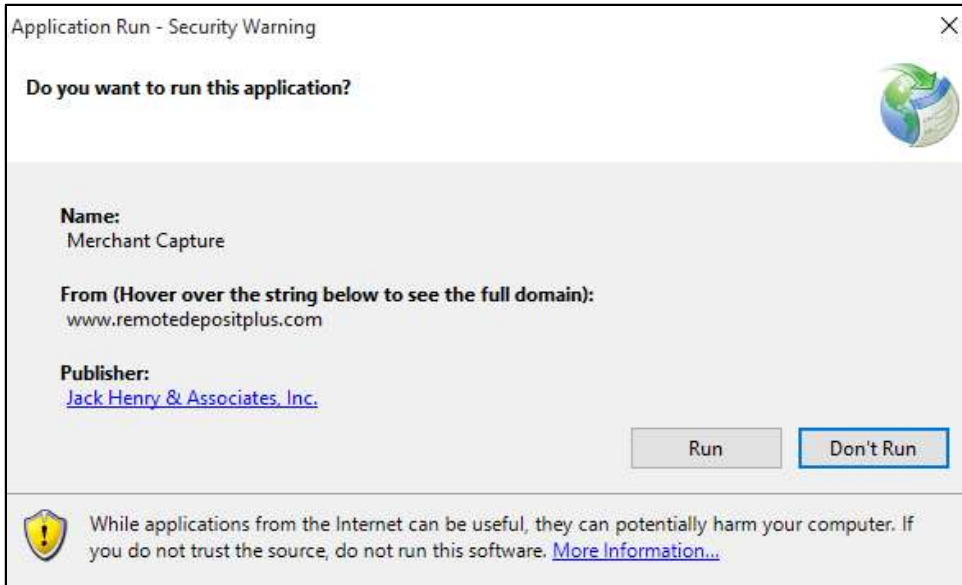


FIGURE 35 – APPLICATION RUN SECURITY WARNING

4. The *Remote Deposit Now* browser appears. The *Home* page lists the last 60 days' worth of messages as well as the following sections of information.
  - **Messages** – Displays notifications about a deposit's progress.
  - **Batches Ready For Edit** – Displays a list of batches that require editing before they can be submitted for deposit.
  - **Batches Ready for Deposit** – Batches that are ready for deposit. These batches need a specified location where they will be deposited and then submitted.
  - **Recent Deposits** – A display of recent items that have been submitted for deposit.

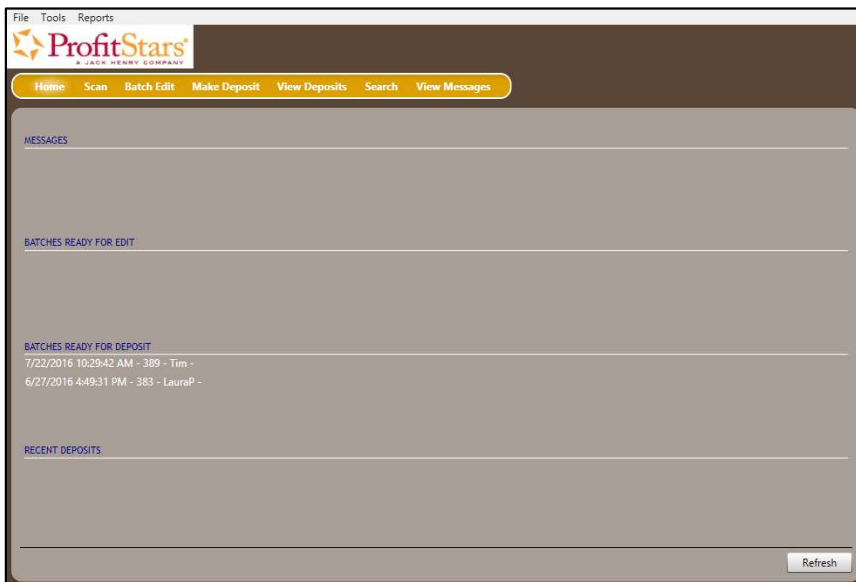


FIGURE 36 - RDN HOME PAGE

1. Select **Scan** from the top of the page to begin scanning checks for deposit.

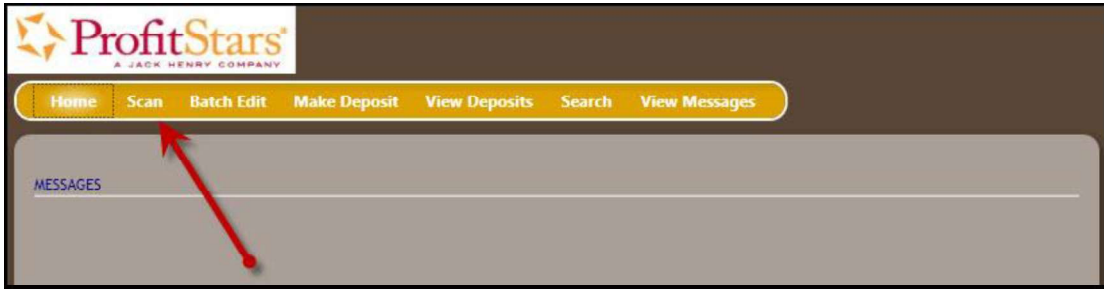


FIGURE 37 - SCAN OPTION

2. If you have more than one scanner driver installed, select arrow next to **Start | Change Scanner** to confirm which scanner you are using.

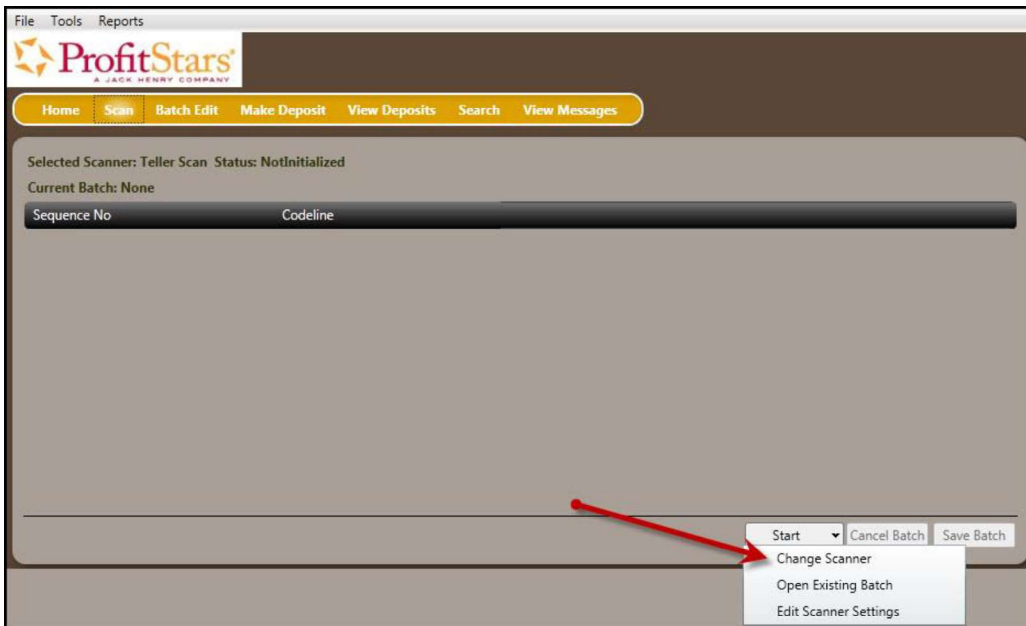


FIGURE 38 - CHANGE SCANNER OPTION

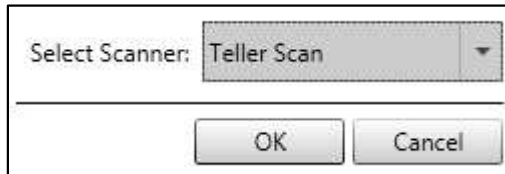


FIGURE 39 - SELECT SCANNER BROWER

3. At the bottom of the page, select **Start** to scan a check.

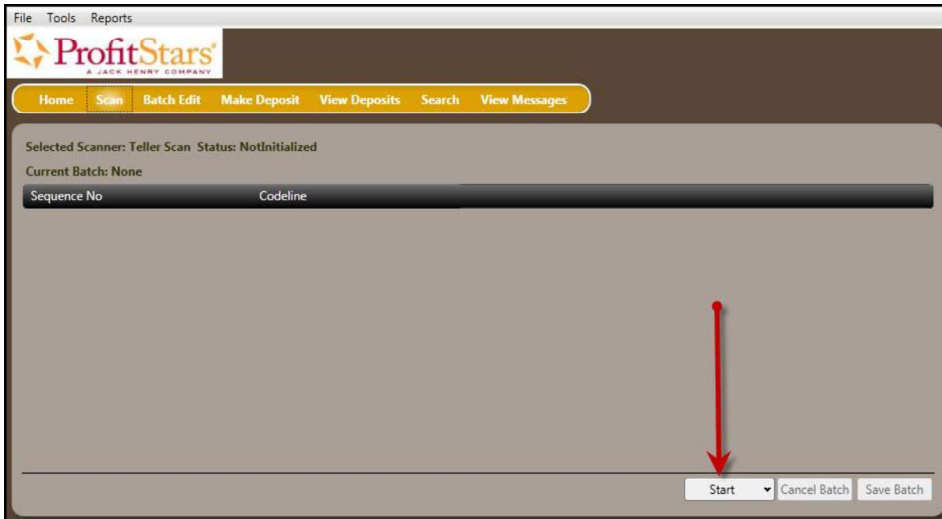


FIGURE 40 - START OPTION

4. A prompt for the *Expected Total* of the deposit appears. Complete the field with a two-decimal place number, and select **OK**. If you do not know the expected total of the batch, you may enter **0.00**.

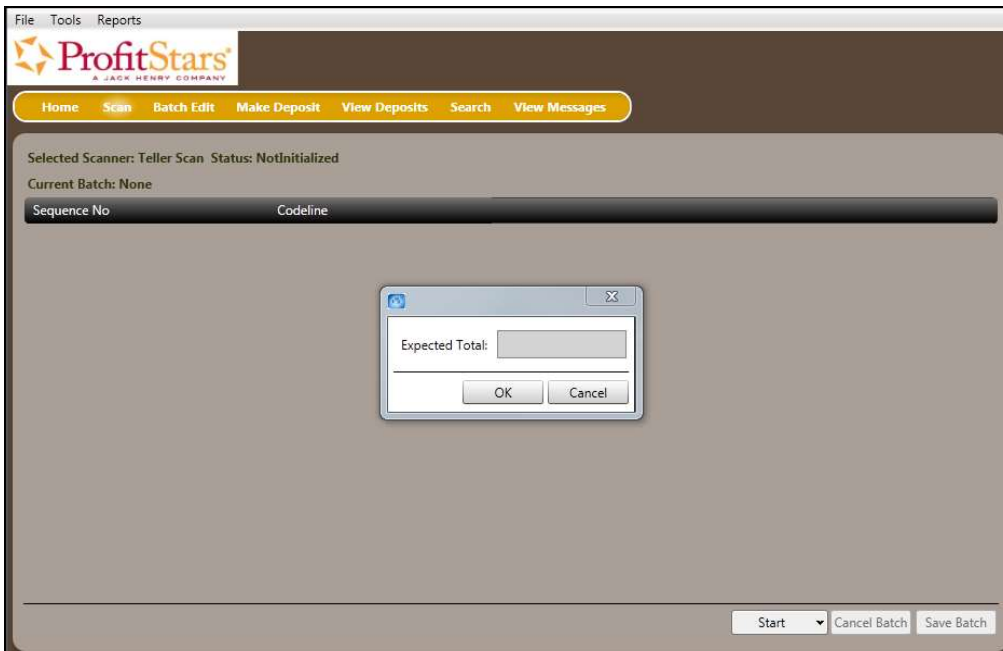


FIGURE 41 - EXPECTED TOTAL AMOUNT FOR A NEW BATCH OF SCANNED ITEMS

5. Select **Start** and scan the check(s) with the scanner. Each item will appear on the page in the order they were scanned with the MICR line displayed.

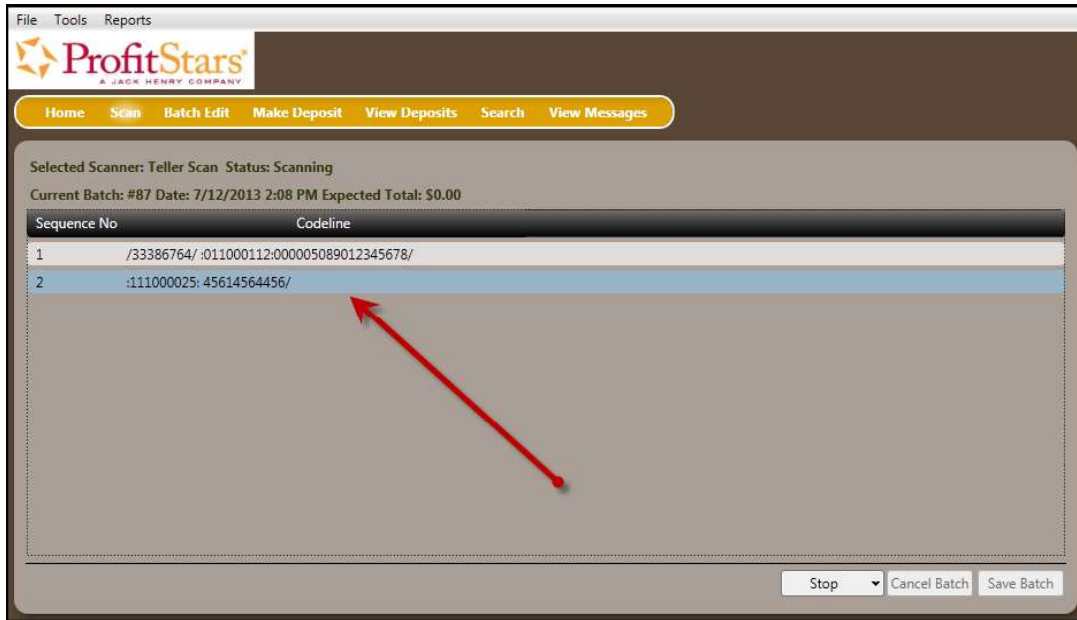


FIGURE 42 - SCANNED CHECKS UNDER A BATCH LIST

6. Select **Stop** when you have finished scanning checks.

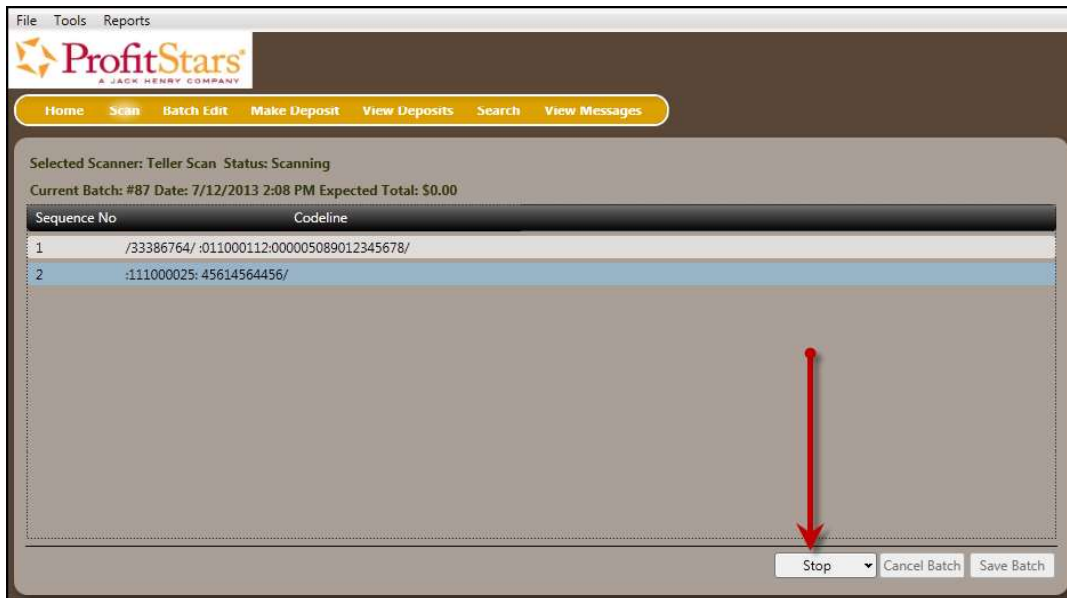


FIGURE 43 - STOP OPTION FOR SCANNING CHECKS

7. Select **Save Batch**.

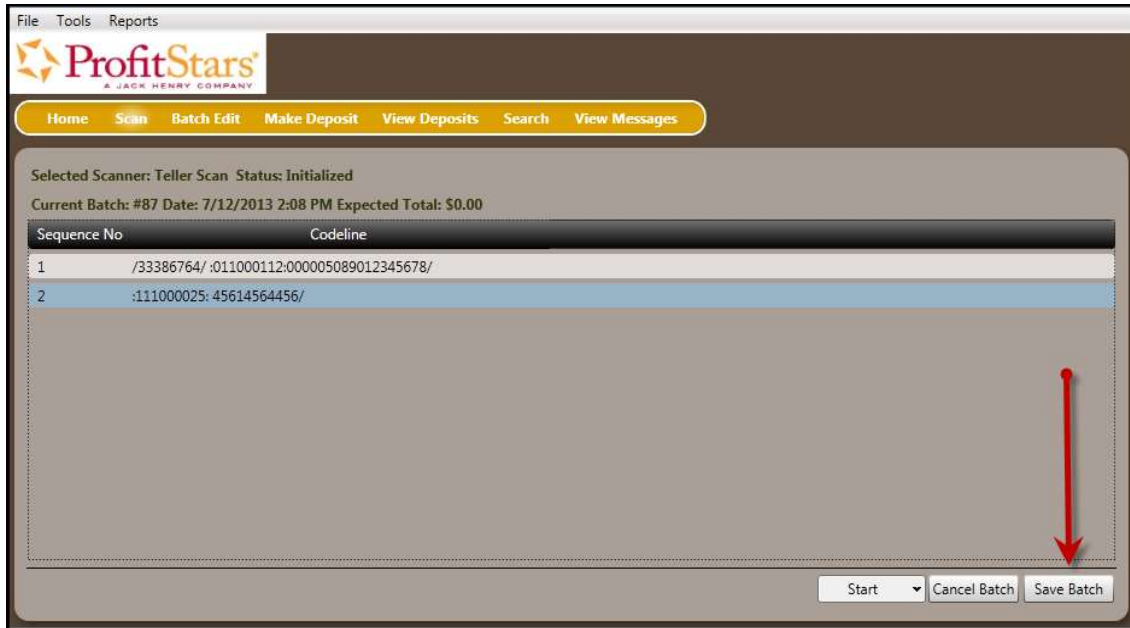


FIGURE 44 - SAVE BATCH OPTION

## Editing a Batch

1. Select **Batch Edit** from the top of the page.

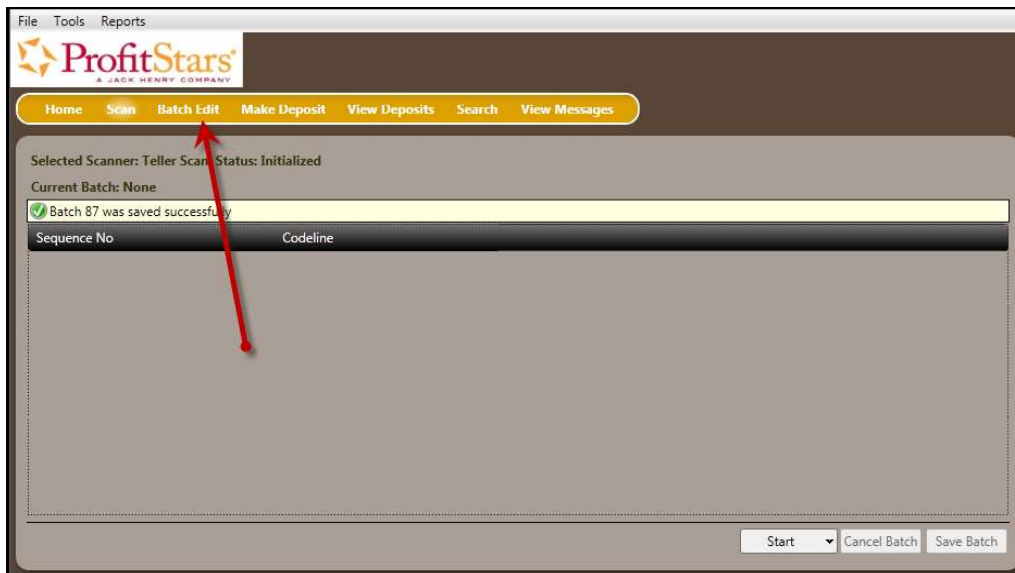


FIGURE 45 - BATCH EDIT PROMPT

2. The batch items appear. Use the left and right navigational arrows at the top of the check images to view the different items within the batch.

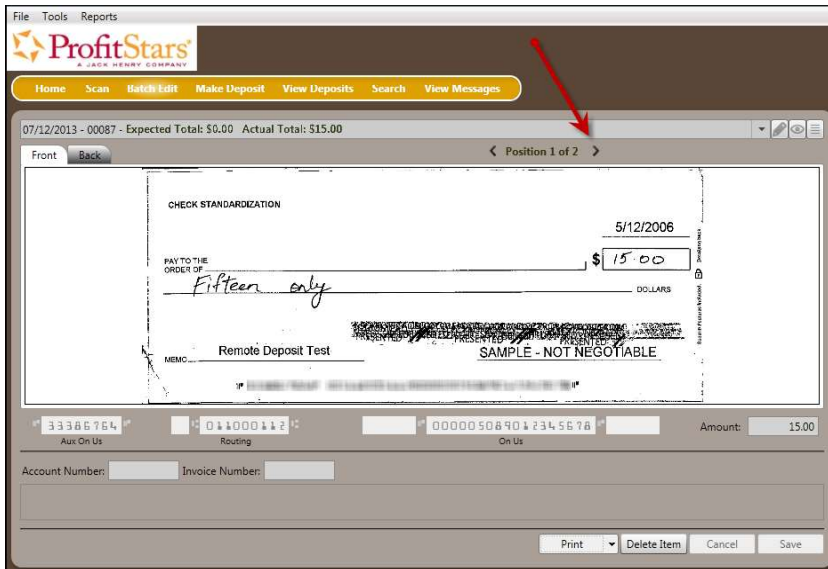


FIGURE 46 - BATCH EDIT PAGE WITH NAVIGATIONAL ARROWS

- From this page, you can enter the **Account Number** and **Invoice Number** for the check item. Although entering data into these fields is not required, this information will reflect in the RDN reporting tool (discussed later) to help identify deposit items.

In the drop-down bar at the top of the page, the *Expected Total* entered and the *Actual Total* counted is displayed. There are three icons in the top right corner of the page that will assist you in editing the scanned items: **Display items needing edit**, **Display proof amount**, and **Display item list**.



FIGURE 47 - BATCH EDIT ICONS

- **Display only items needing edit (pencil icon)** – Show items that need editing one at a time. Any items needing a MICR repair will display in red.

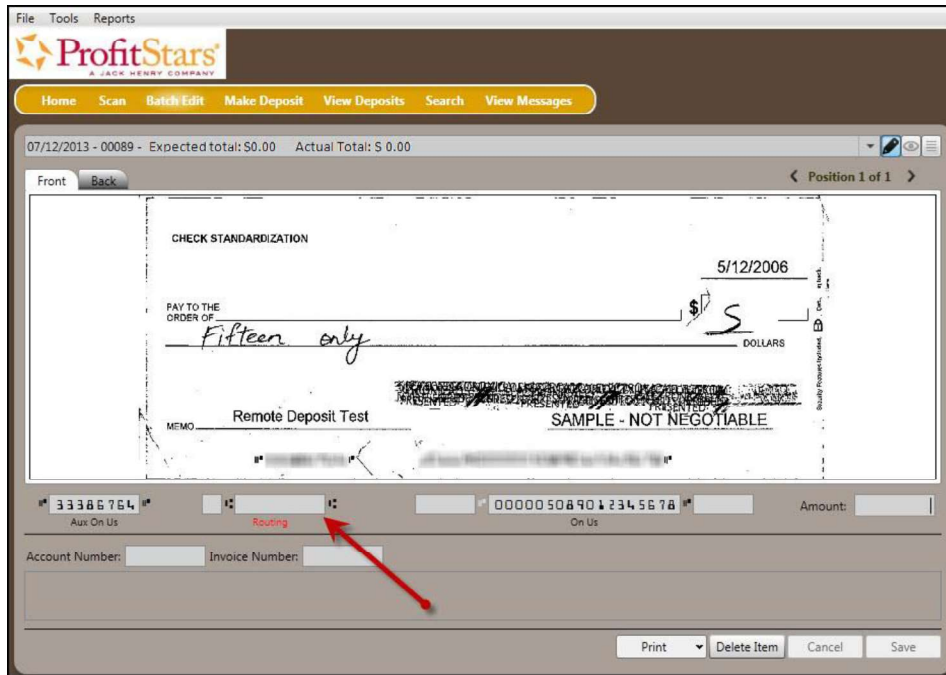


FIGURE 48 - ITEM WITH FIELD IN NEED OF EDITING

- **Display proof amount (eye icon)** – The system will display the dollar amount of the item read by the scanner.

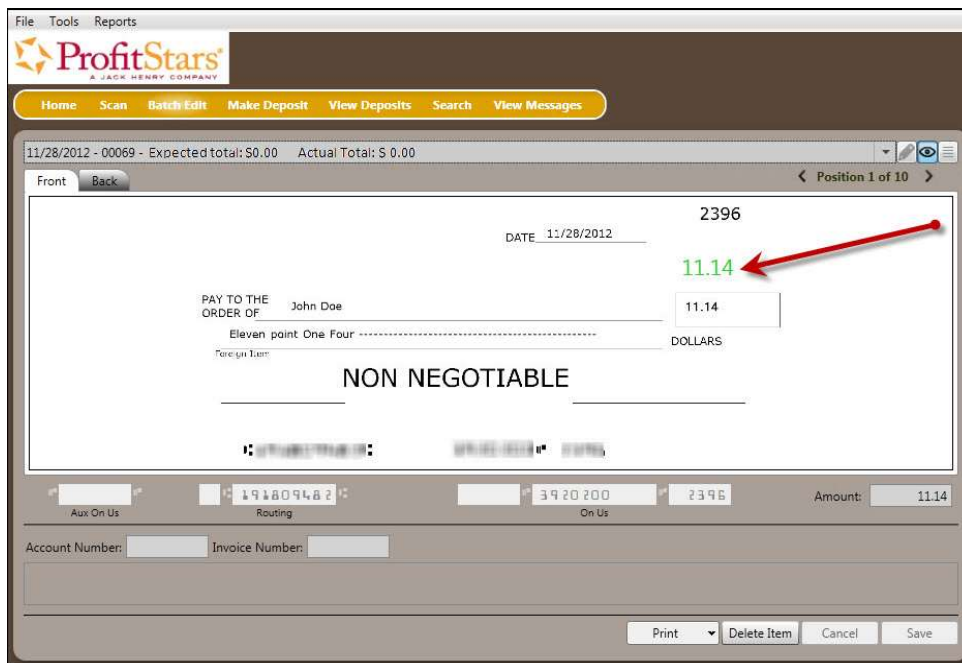


FIGURE 49 - PROOF AMOUNT DISPLAY

- **Display item list (page icon)** – This icon displays the MICR line and amount of each item in the sequence they were scanned. A pencil icon to the left of an item indicates that edits are needed for that item. Selecting any one item in the sequence will show its image and information available for editing on the left side of the page.

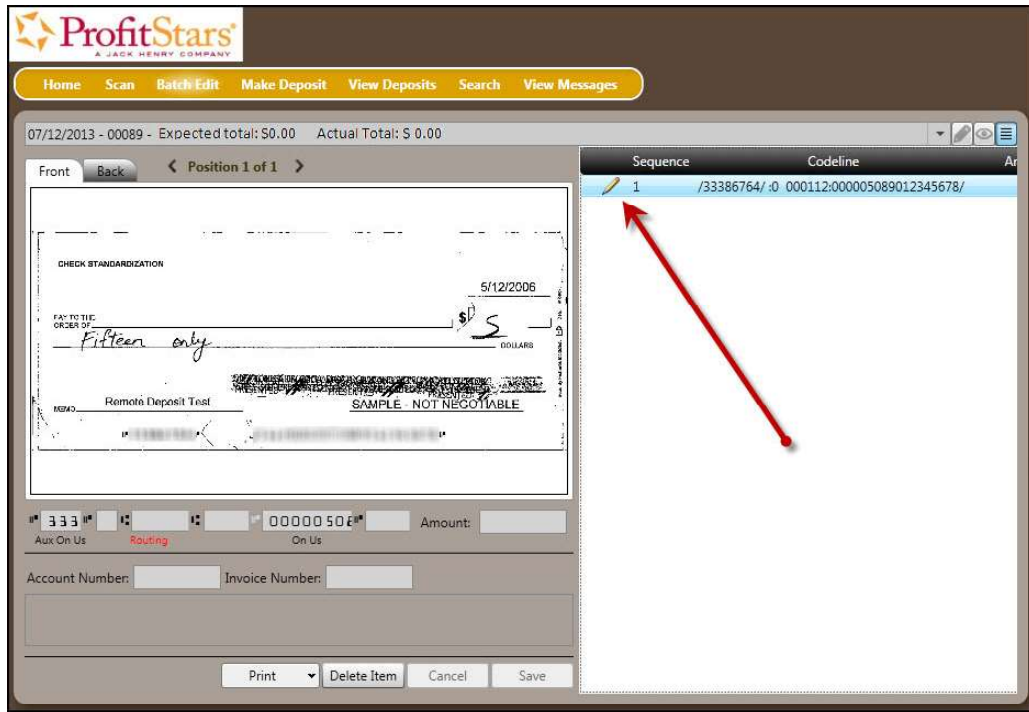


FIGURE 50 - BATCH EDITING TOOLS

## Editing a Batch Total

1. If you need to adjust a batch total, click **Scan**.

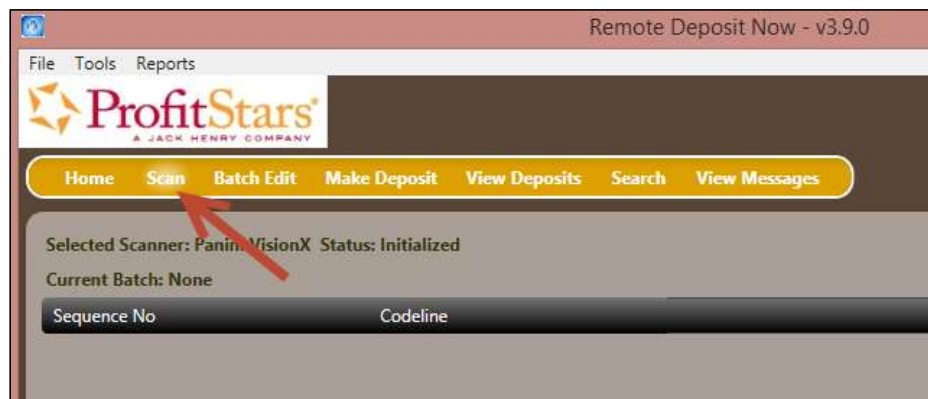


FIGURE 51 – SCAN COMMAND

2. Select **Open Existing Batch** from the **Start** drop-down menu.



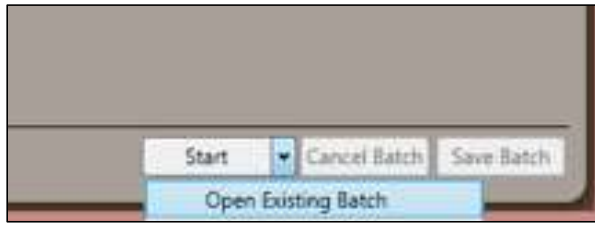


FIGURE 52 – OPEN EXISTING BATCH

3. The *Select Batch* window will appear. Choose the batch to be edited from the *Select Batch* drop-down menu.

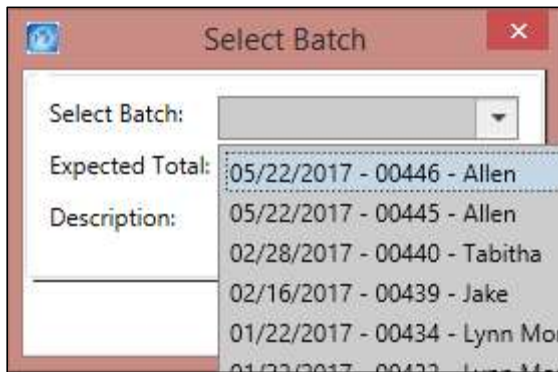


FIGURE 53 – SELECT BATCH

4. Enter the new total in the **Expected Total** field.

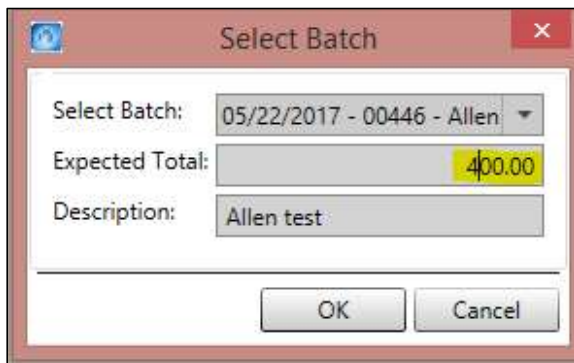


FIGURE 54 – EXPECTED TOTAL

5. Click **OK**.

## Performing a MICR Repair

1. From the *Batch Edit* page, compare the numbers on the bottom of the page to those on the bottom of the check: Aux On Us, Routing number, On Us, and check number. Any

fields on the *Batch Edit* page that are incorrect or were left blank must be entered manually.

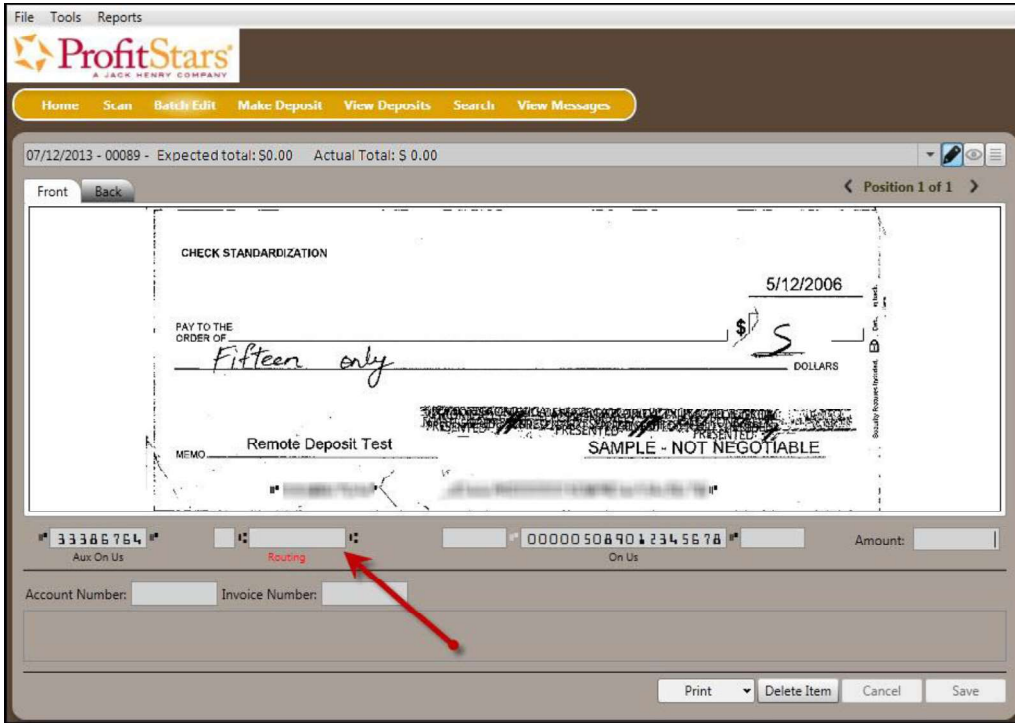


FIGURE 55 - PERFORMING A MICR REPAIR

2. Select **Save** at the bottom of the page when all edits have been completed.

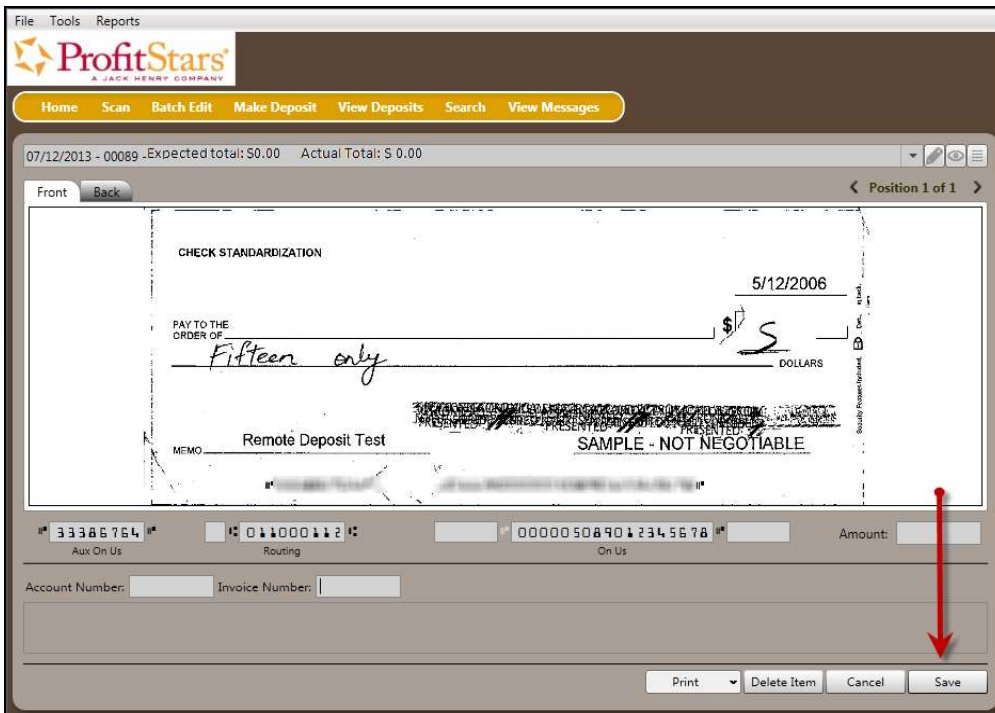


FIGURE 56 - SAVE OPTION AFTER EDITING

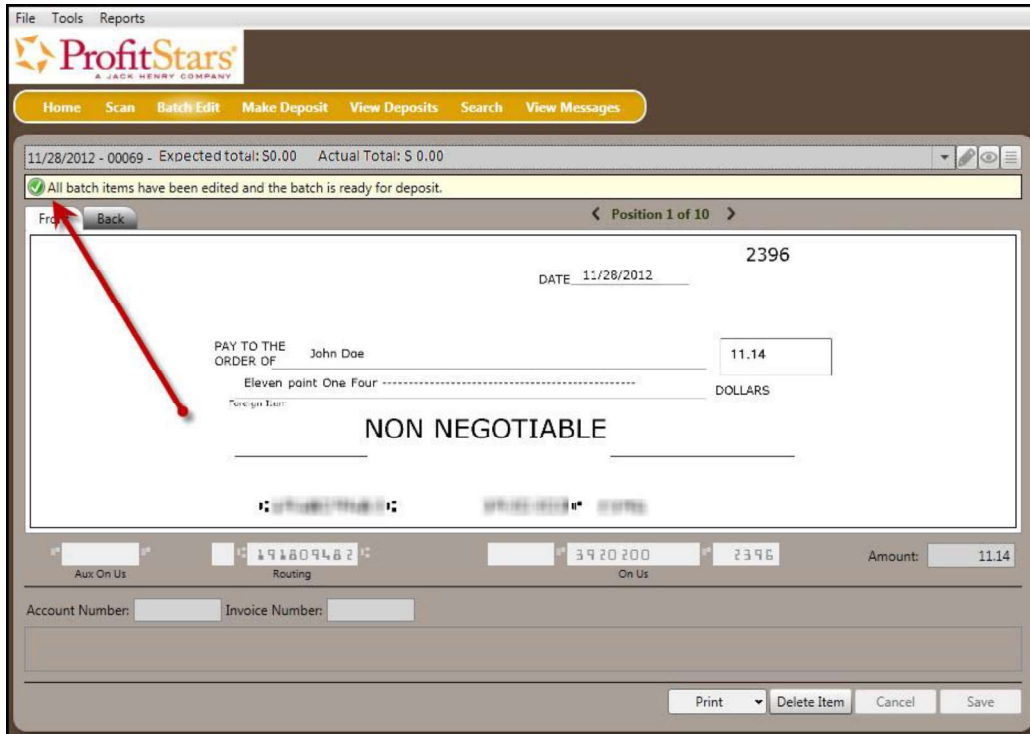


FIGURE 57 - SAVE CONFIRMATION

## Keying In a Dollar Amount

1. To input the dollar amount of the check, enter the amount in the *Amount* field at the bottom of the page. Use the navigational arrows to view different items.



FIGURE 58 - ENTERING AN AMOUNT

2. Select **Save** at the bottom of the page when all changes are complete.

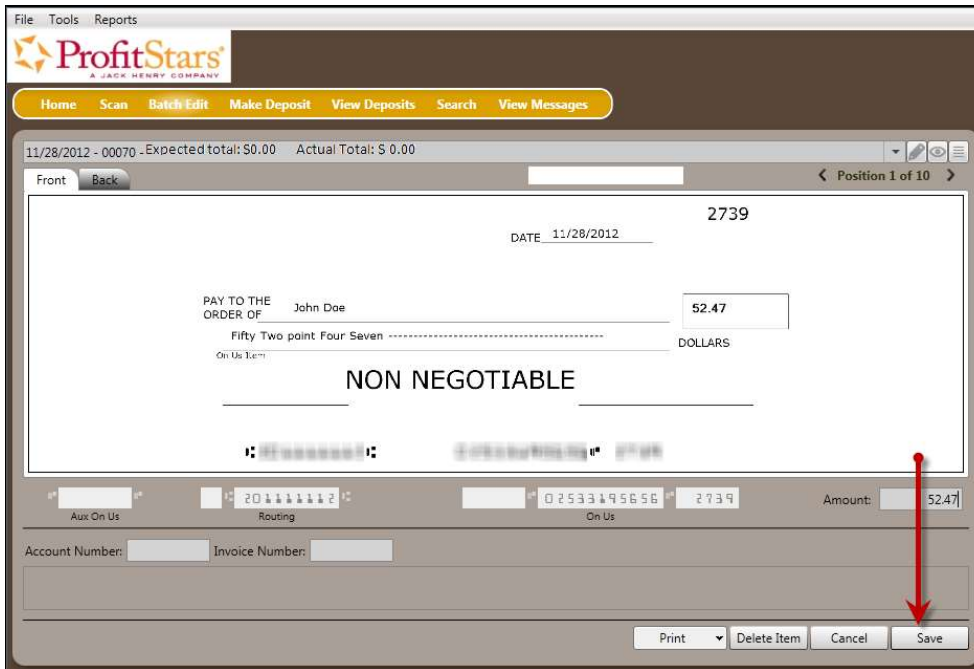


FIGURE 59 - SAVING EDITS TO THE DOLLAR AMOUNT

## Deleting an Item

1. From the bottom of the *Edit Batch* page, select **Delete Item**.



FIGURE 60 - DELETE ITEM PROMPT

2. The system will prompt for a confirmation in deleting an item. Select **Yes**.



FIGURE 61 - DELETE CONFIRMATION

## Deleting a Batch

1. Select **Tools | Delete Batch** from the top of the window.

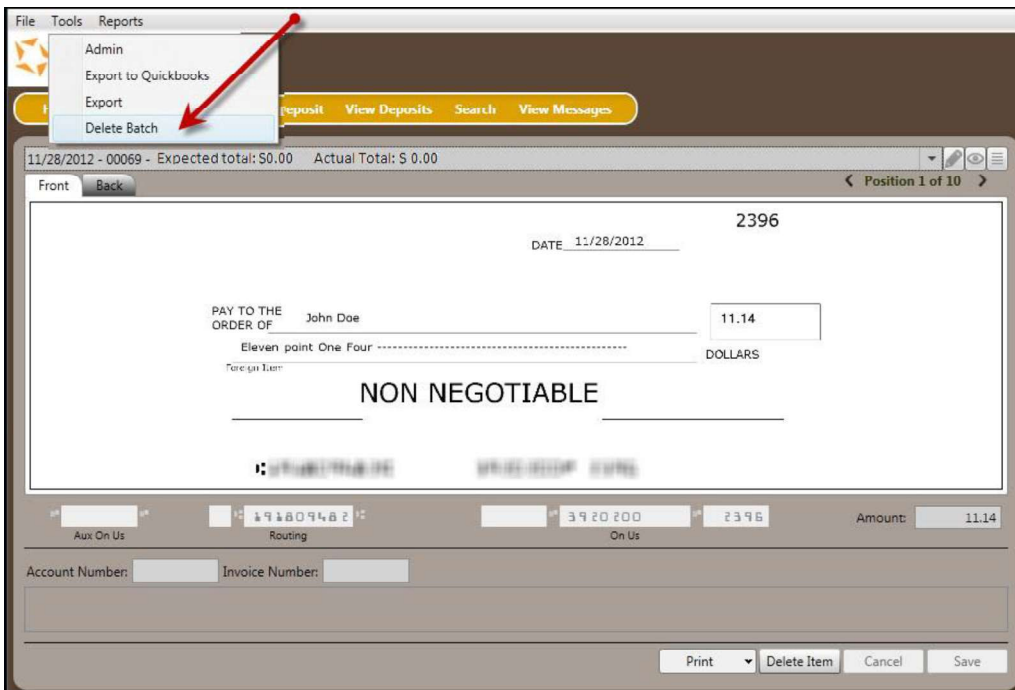


FIGURE 62 - DELETE BATCH OPTION UNDER TOOLS

2. The *Select Batches to Delete* window appears. Highlight the batch you wish to delete, and select **Delete Selected**. You may also opt to **Select All** batches to delete.

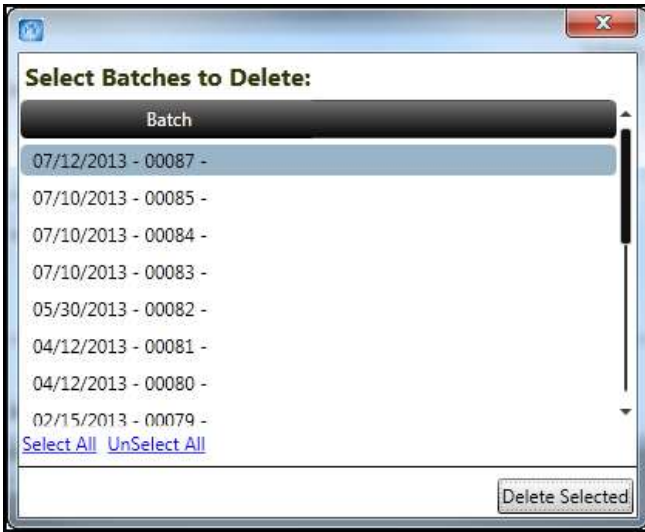


FIGURE 63 - SELECTING BATCHES TO DELETE

3. A prompt appears asking to confirm deleting the batch. Select **Yes**.

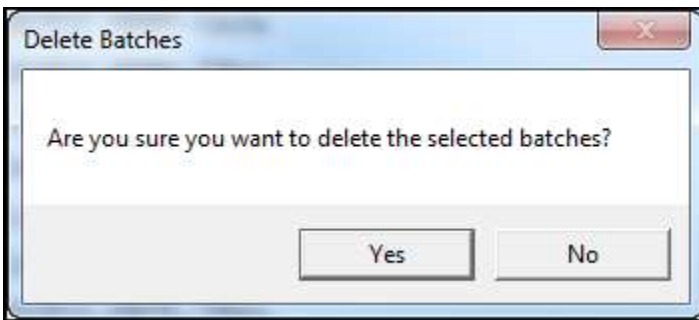


FIGURE 64 - DELETE BATCH CONFIRMATION

4. After deleting a batch, select the **Home** link at the top of the page. At the bottom right corner, select **Refresh** to update the page. Deleted batches will no longer display as either *Ready for Edit* or *Ready for Deposit*.

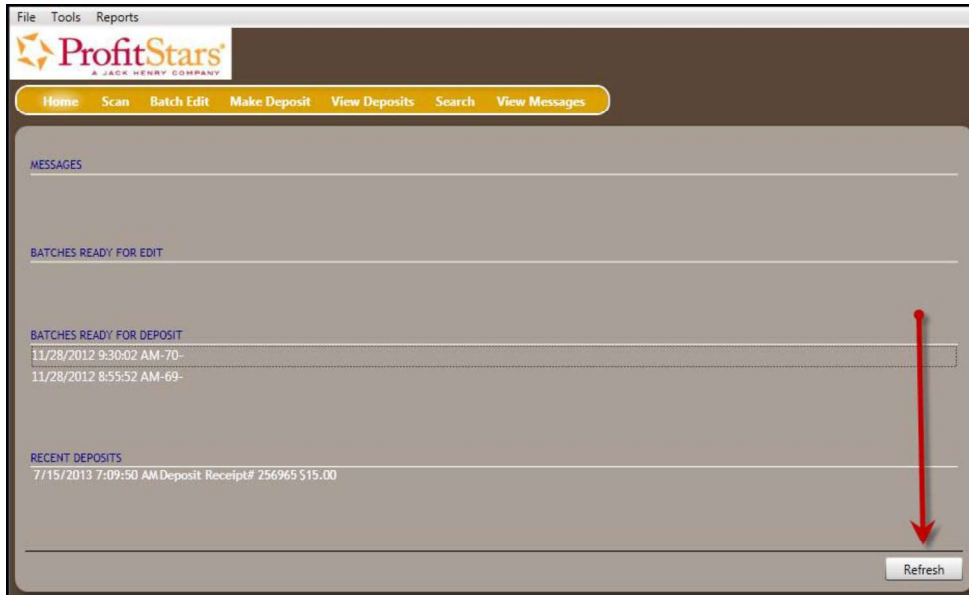


FIGURE 65 - REFRESH BUTTON ON HOME PAGE

## Duplicate Checks

If a check has been scanned twice within the past 75 days, a duplicate check warning will display on the top left corner of the *Batch Edit* page. Duplicates will not prevent you from making the deposit.

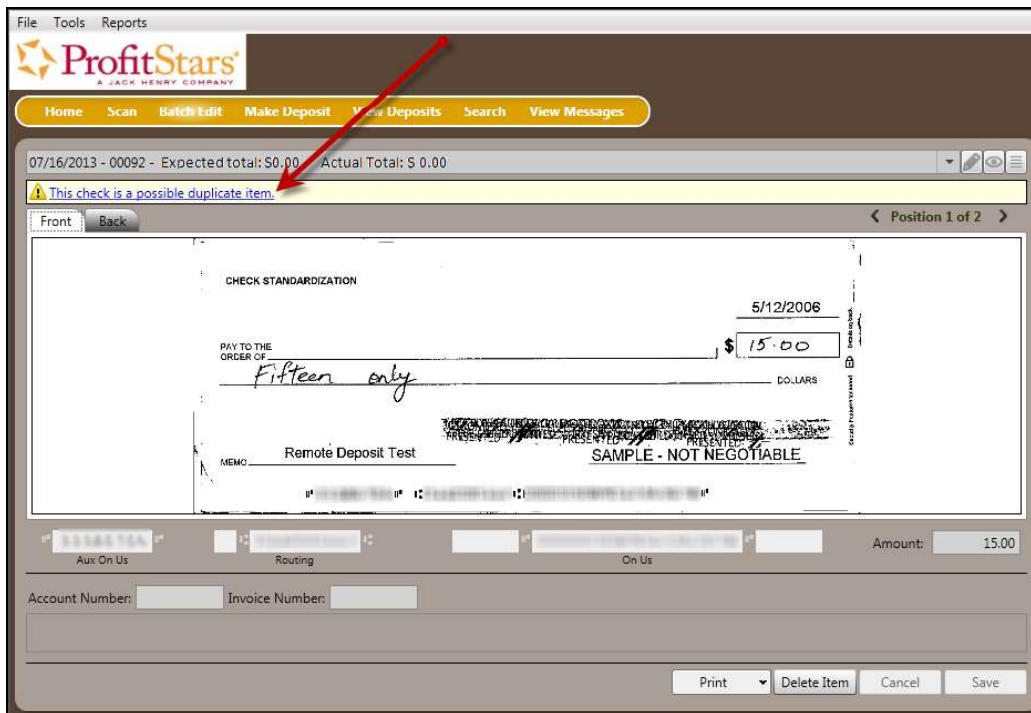


FIGURE 66 - DUPLICATE CHECK WARNING

# Submitting a Deposit

Once the *All batch items have been edited and the batch is ready for deposit* message displays on the *Batch Edit* page, you are ready to submit your deposit.

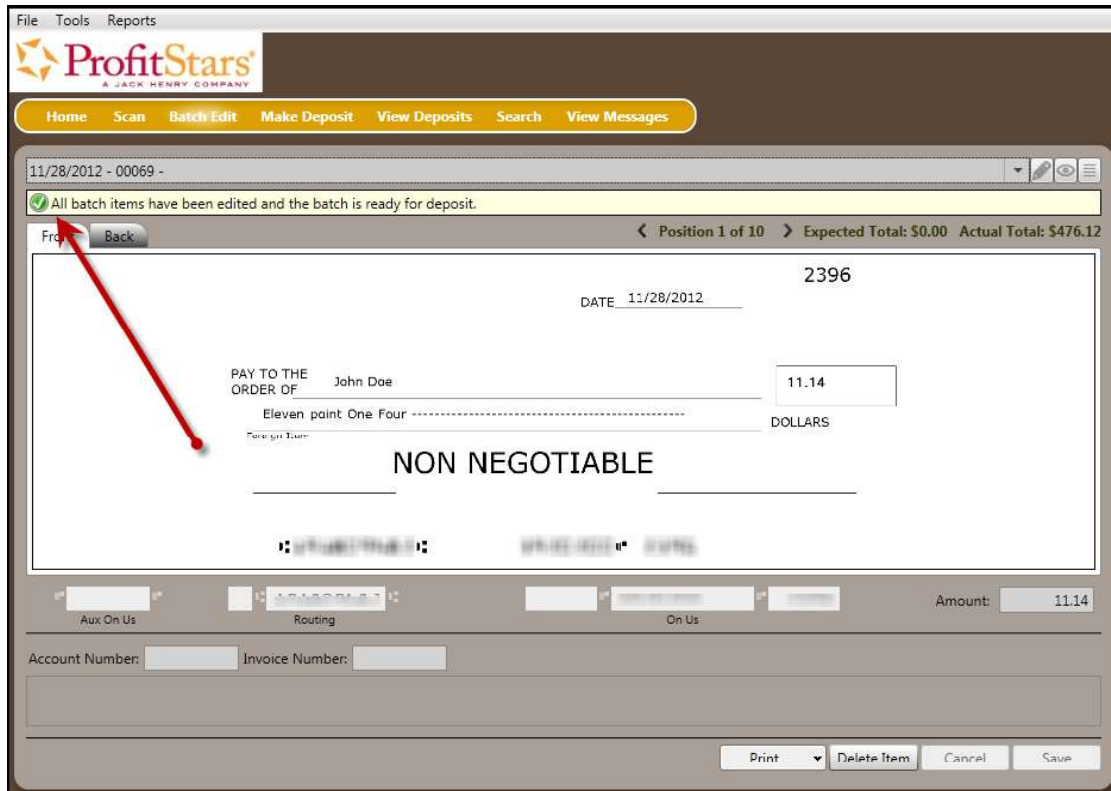


FIGURE 67 - BATCH READY FOR DEPOSIT PROMPT

1. Select the **Make Deposit** option at the top of the page. A list of open batches that have not yet been submitted appears.



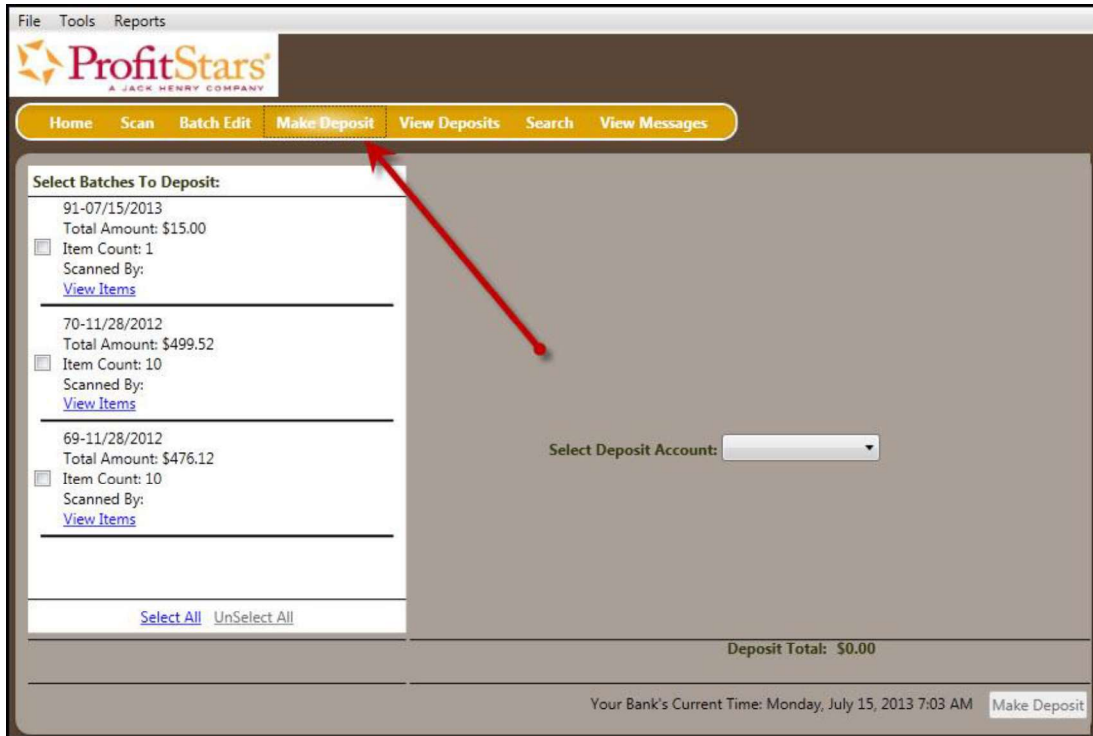


FIGURE 68 - MAKE DEPOSIT LINK

2. Select the check box next to the deposit(s) that you are ready to submit. You may also click **Select All** to select all open deposits.

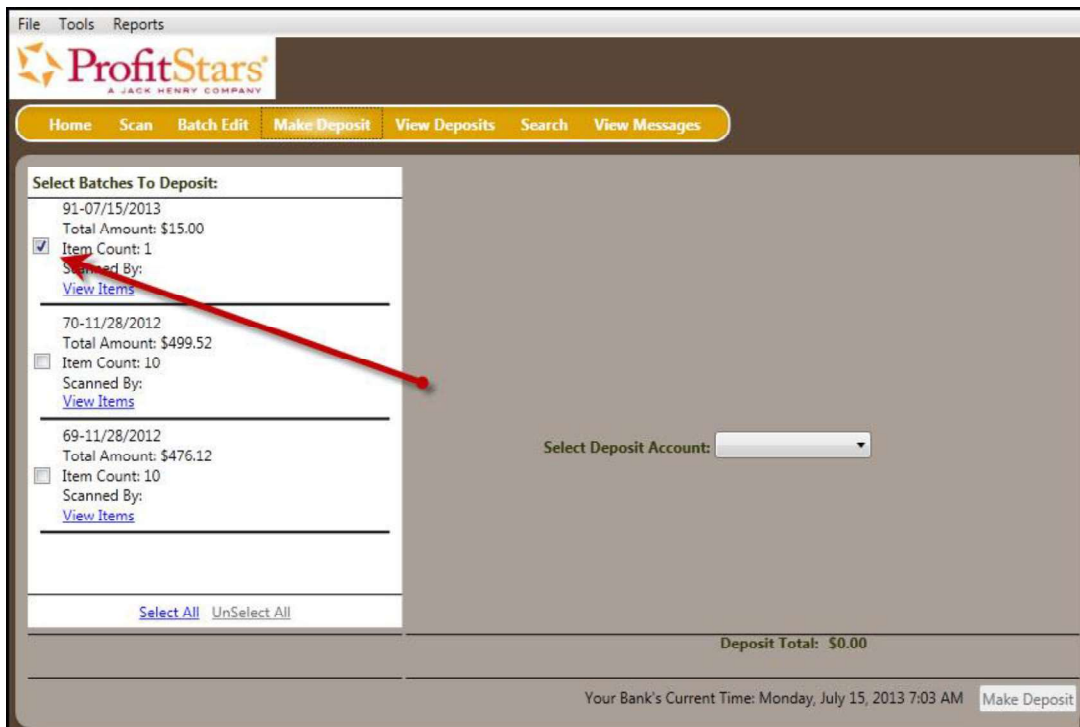


FIGURE 69 - SELECTING A BATCH TO DEPOSIT

3. If necessary, select the account location to send the deposit from the **Select Deposit Account** drop-down menu.

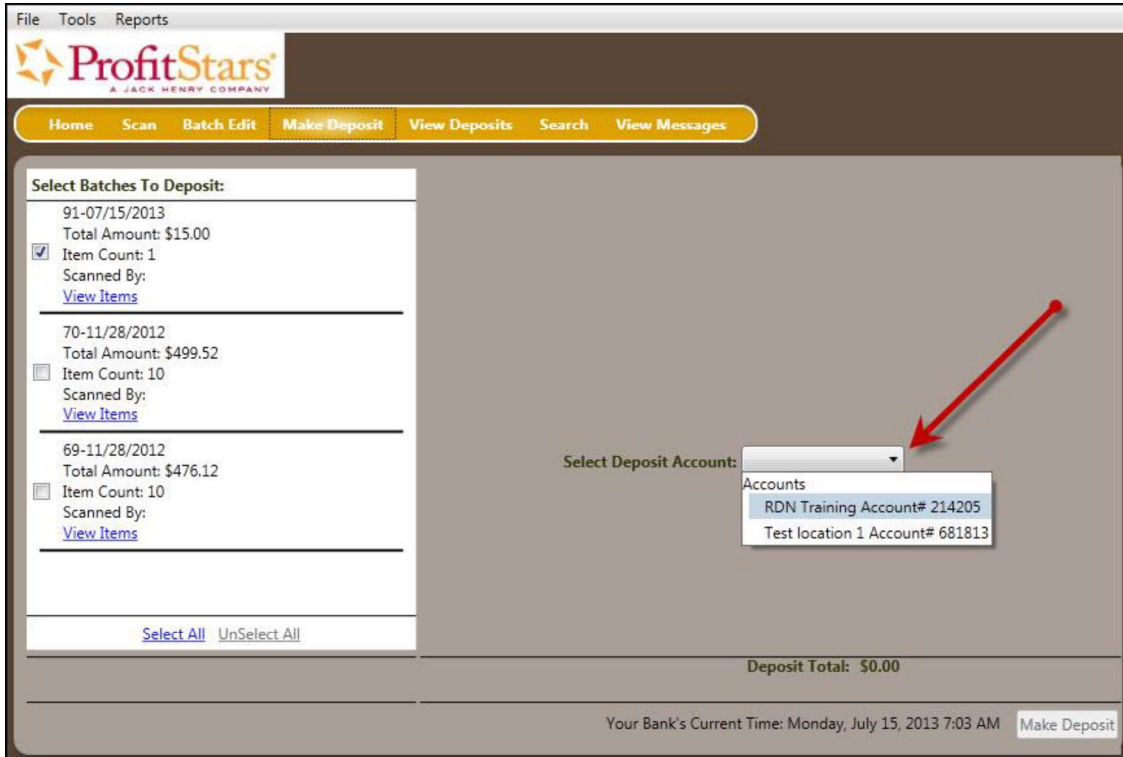


FIGURE 70 - SELECT DEPOSIT ACCOUNT OPTION

---

**NOTE:** Batches can only be submitted by one account location at a time. To submit a deposit to a different location other than the one selected, you must first finish your current deposit submission.

---

4. Select **Make Deposit** at the bottom of the page to submit your batch(es).

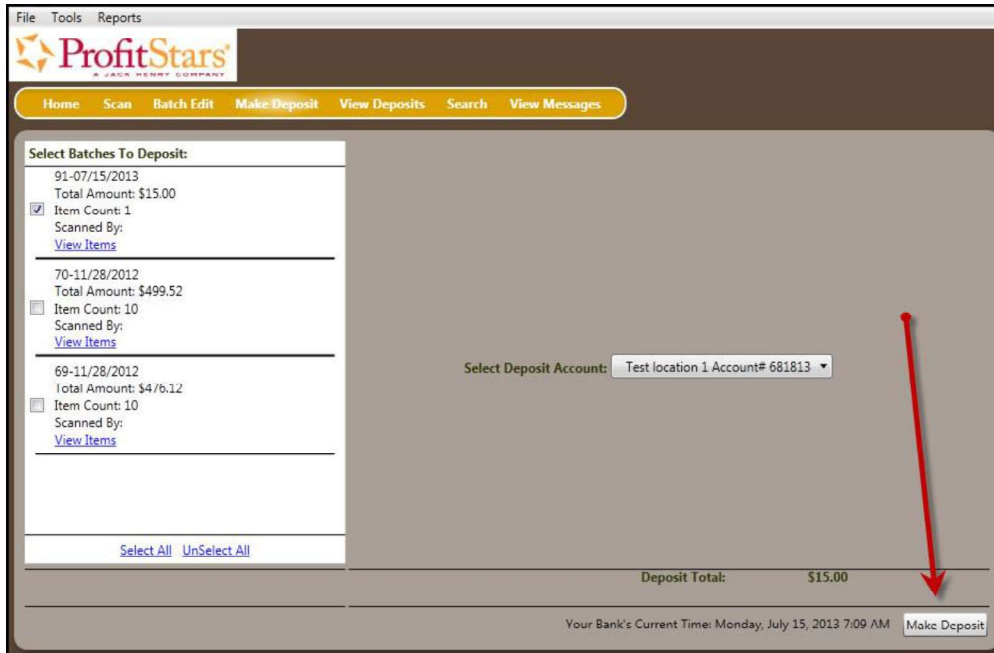


FIGURE 71 - MAKE DEPOSIT OPTION

5. A deposit confirmation message appears stating that the deposit was successful, with a receipt number. Select **OK**.

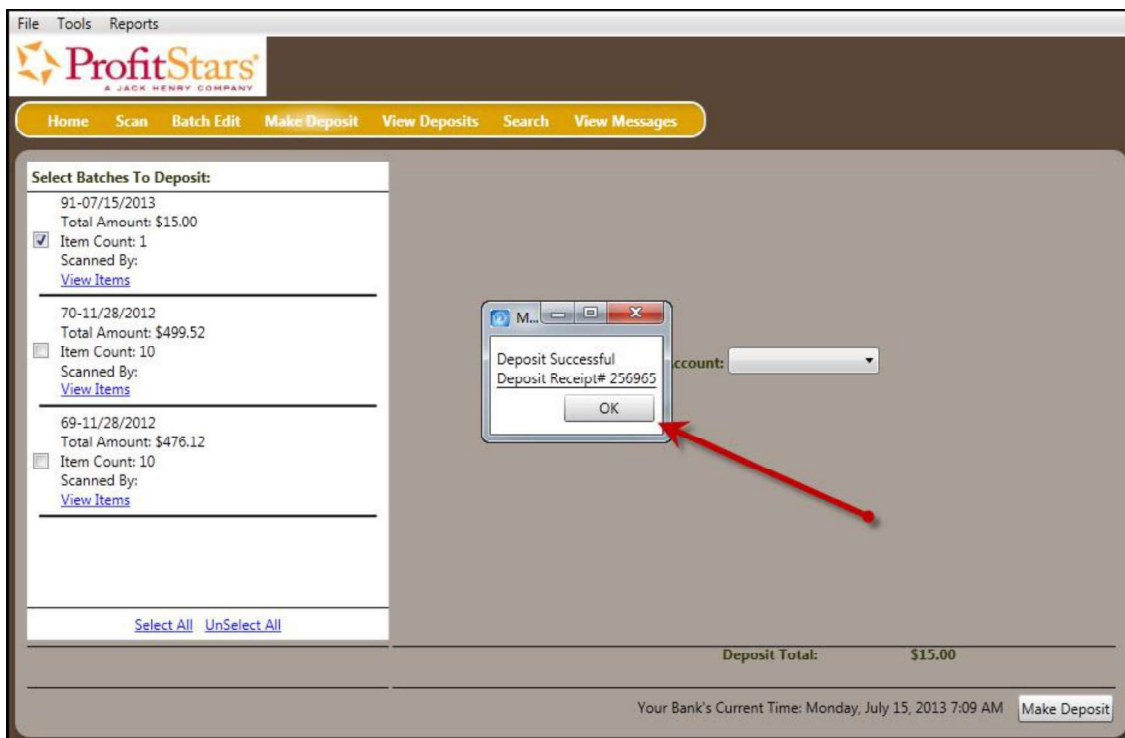


FIGURE 72 - DEPOSIT SUCCESSFUL CONFIRMATION PAGE

6. The batch(es) you submitted are removed from the *Make Deposit* page, since they are no longer open. To see the status of the submitted deposit(s), select **Home**.

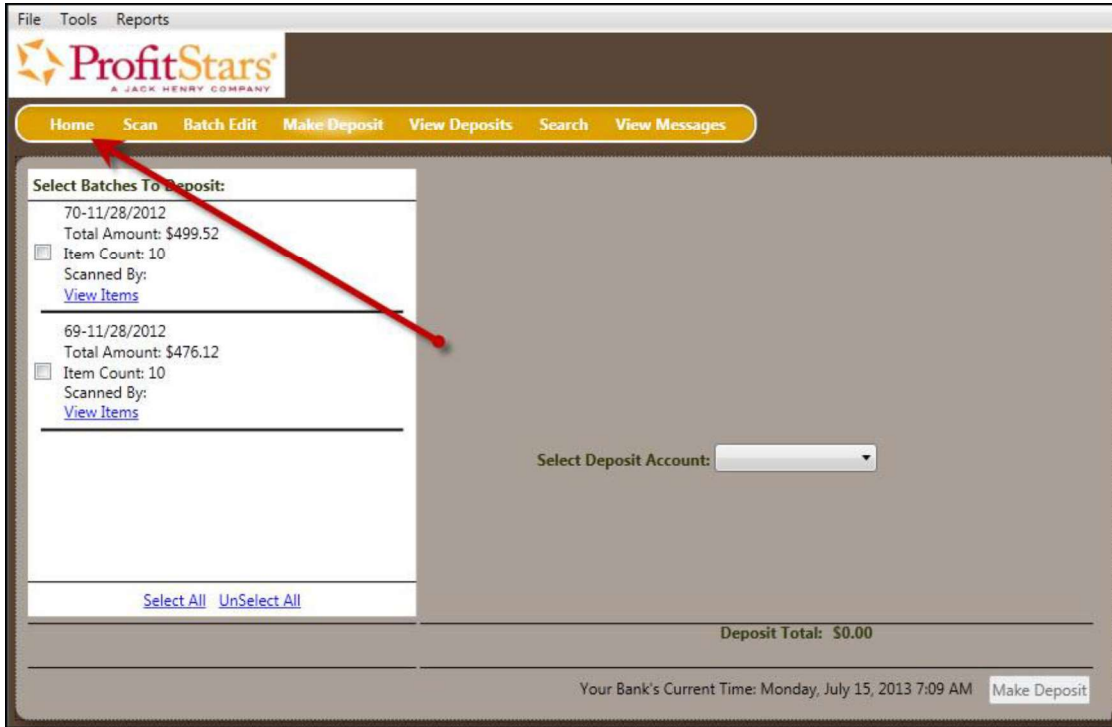


FIGURE 73 - SELECT HOME PAGE OPTION

7. Submitted deposits are listed under the *Recent Deposits* section.

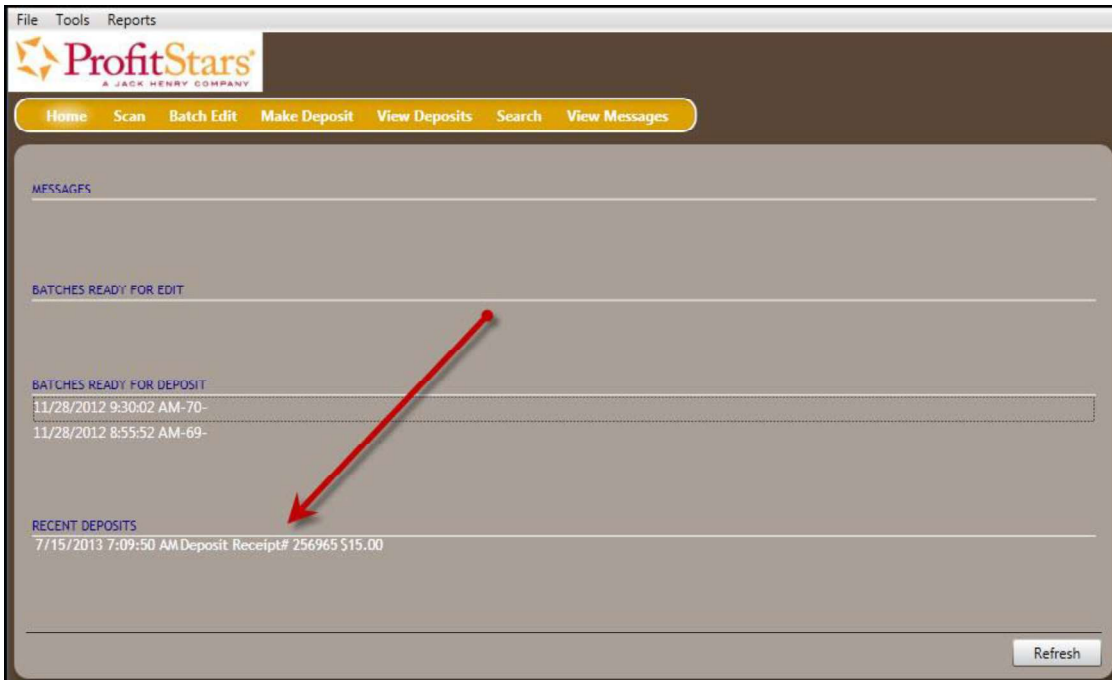


FIGURE 74 - RECENT DEPOSITS LISTING

---

**NOTE:** Any batches that have been saved and edited, but not submitted, will appear under the *Batches Ready For Deposit* section.

---

8. To exit the RDN application, select **File | Exit** at the top left corner of the page.

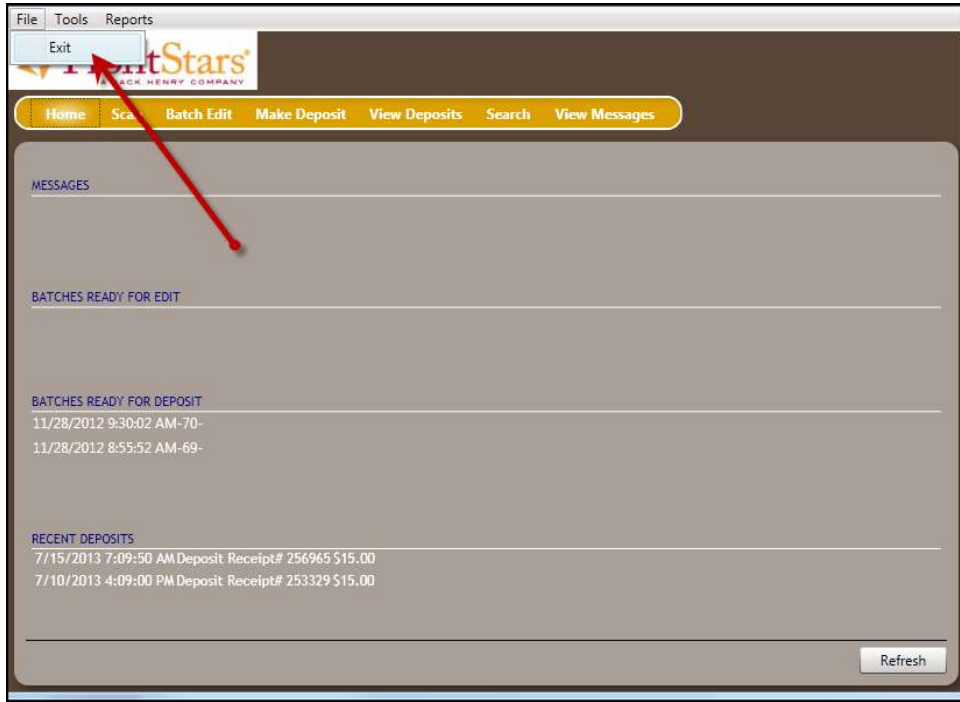


FIGURE 75 - EXITING THE RDN APPLICATION

# Reporting

Although both the RDN window and the system application have reporting capabilities detailed in this document, the application reporting tools are recommended for viewing items that have been submitted for deposit. The following sections outline both RDN application reporting and application reporting.

## RDN Application Reporting

### Viewing Deposits

1. Select the **View Deposits** link at the top of the page to view batch/item information.

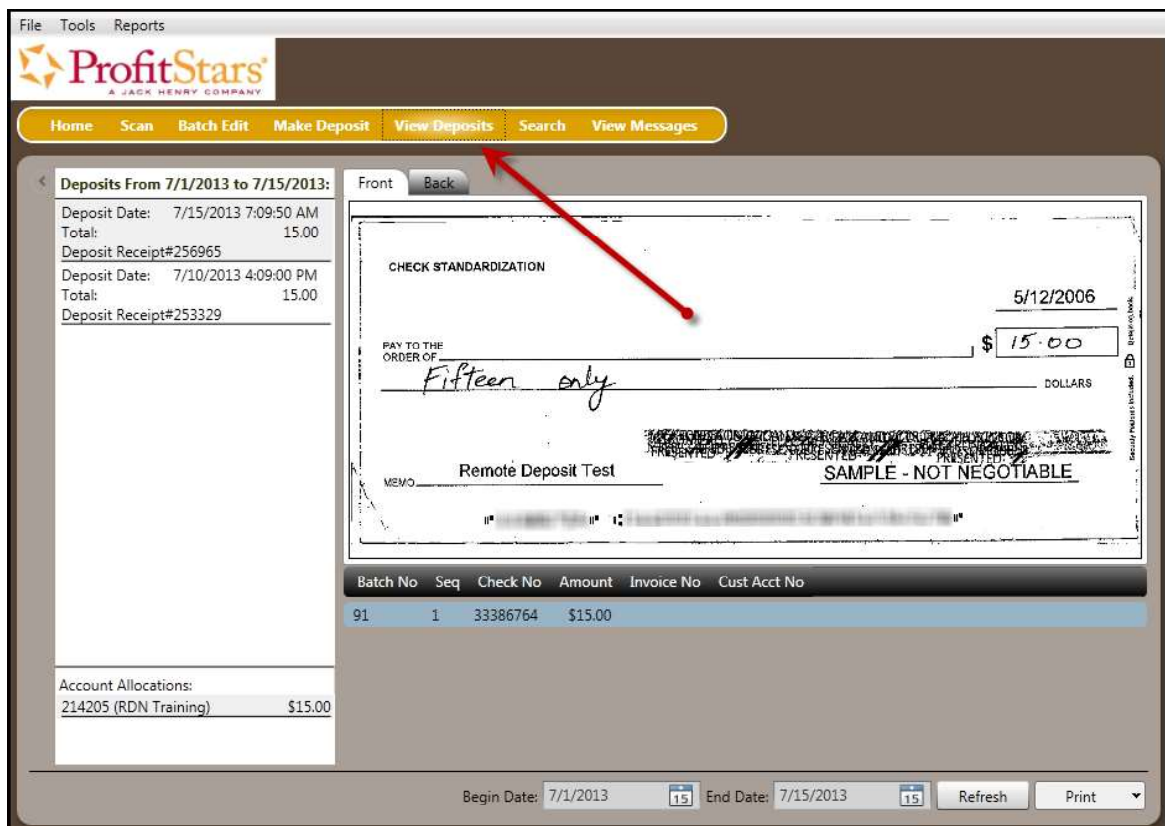


FIGURE 76 - VIEW DEPOSITS LINK

2. A list of deposits appears. To narrow your list of deposits, select a **Begin Date** and **End Date** at the bottom of the page.

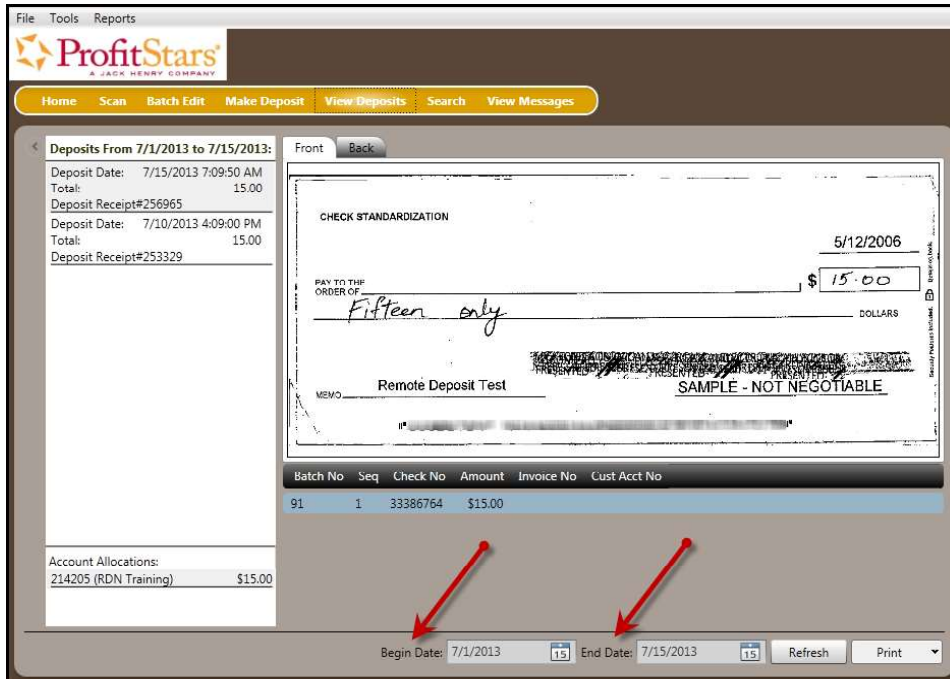


FIGURE 77 - BEGIN AND END DATES FOR VIEWING DEPOSITS

3. Select **Refresh** at the bottom of the page to view the deposit(s) within the date range.
4. To view the front and back side of a check image, select **Front** and **Back** from the tabs at the top of the image.



FIGURE 78 - FRONT AND BACK VIEW OPTIONS FOR A CHECK IMAGE

## Printing Images of Items

1. From the *View Deposits* page, highlight which deposit to view from the left column. The item(s) for that deposit appear.

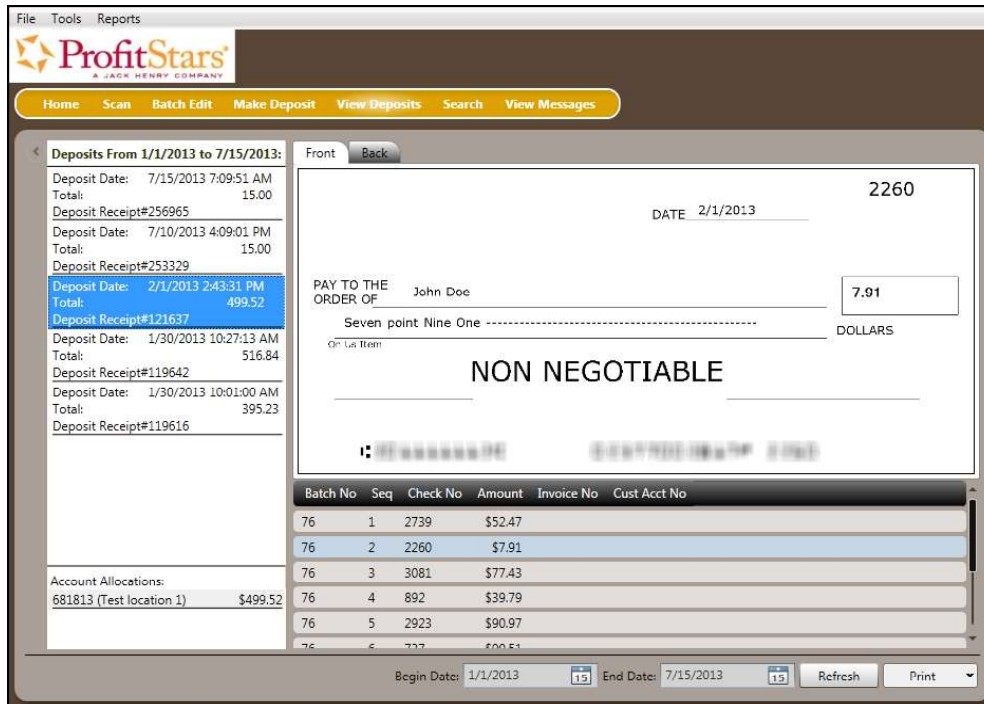


FIGURE 79 - VIEWING DEPOSIT ITEMS

2. At the bottom of the page, select one of several options for printing.
  - Select **Print** to print the front and back of the check currently highlighted.
  - Select the drop-down menu next to *Print* and click **Print All** to print the front and back images of all the items in the deposit.
  - Select the drop-down menu next to *Print* and click **Print All Fronts Only** to print only the front images of all the items in the deposit.



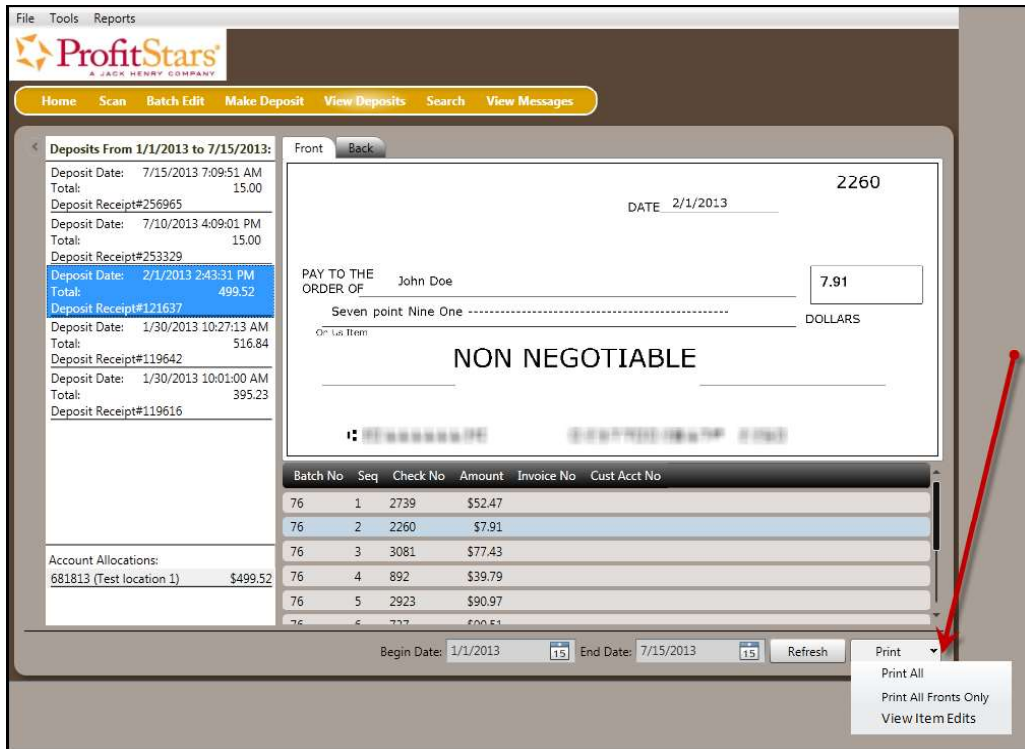


FIGURE 80 - PRINTING OPTIONS UNDER VIEW DEPOSITS

- From the bottom of the page, select the drop-down menu next to *Print* and click **View Item Edits** to see which user(s) have edited transaction amounts for the deposit in the RDN application.

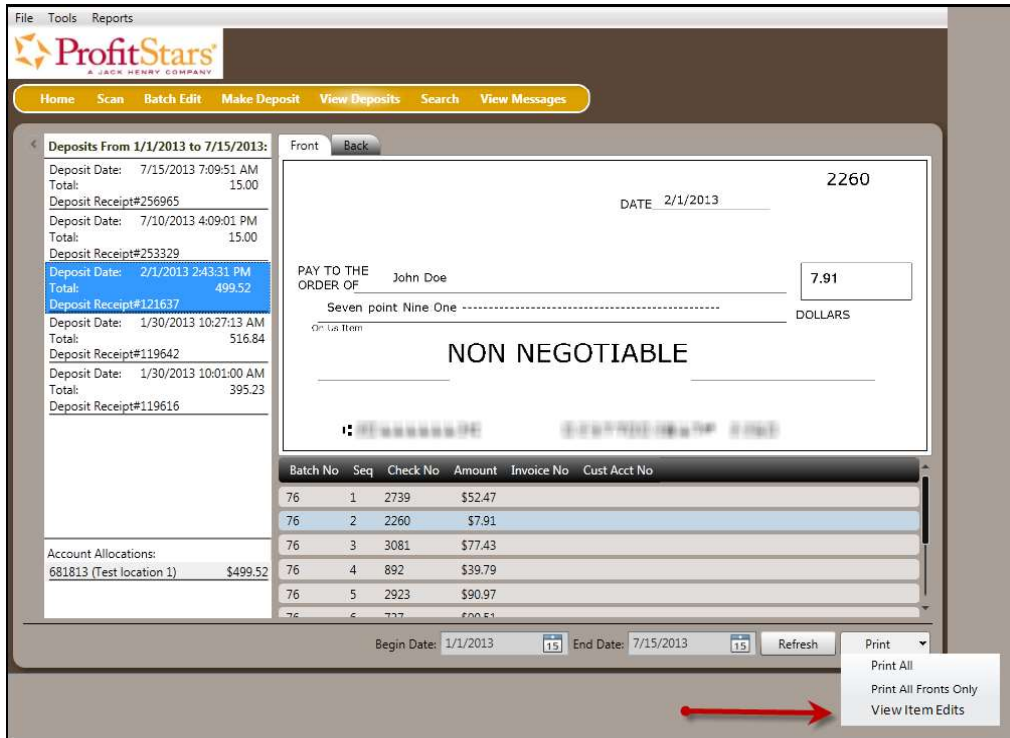


FIGURE 81 - VIEW ITEM EDITS OPTION

4. A list of edits made to the transaction will display, along with the *Date*, *User* who edited the transaction, the name of the field (*Field Name*) that was altered in the transaction, the *Before Value* of the field, and the *After Value* of the field.



FIGURE 82 - EDITS MADE TO AN ITEM

## Searching for an Item

1. To look for a specific item in the RDN application, select **Search** from the top of the page.

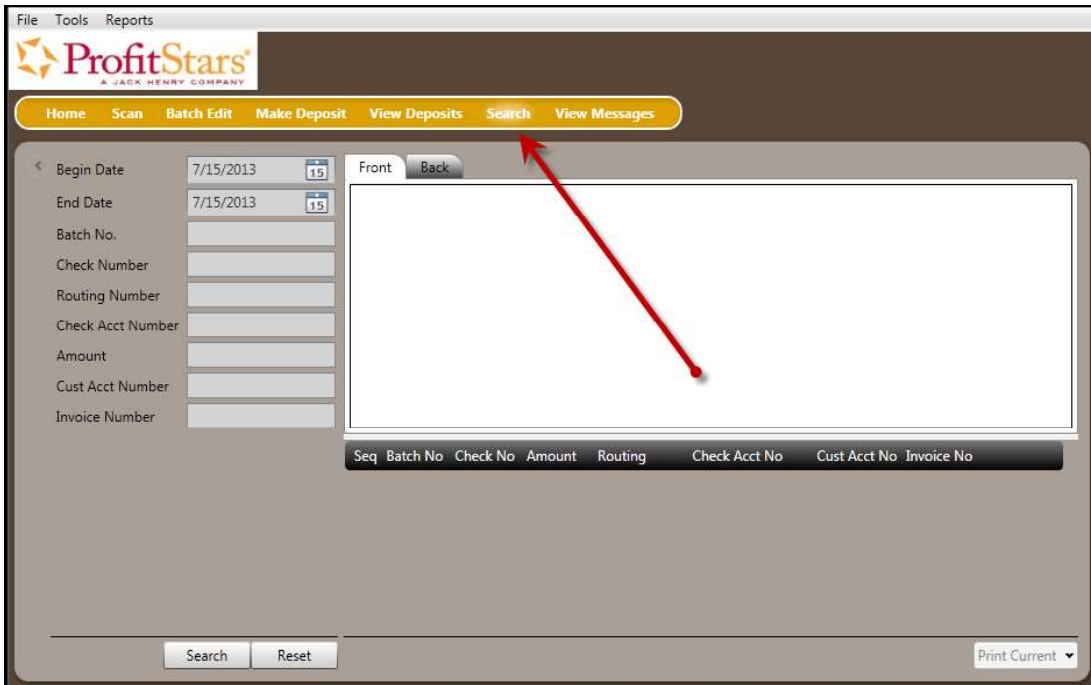


FIGURE 83 - SEARCH OPTION

2. To search for specific item, complete the search criteria fields displayed. For a range of items between certain dates, complete only the **Begin Date** and **End Date** fields.

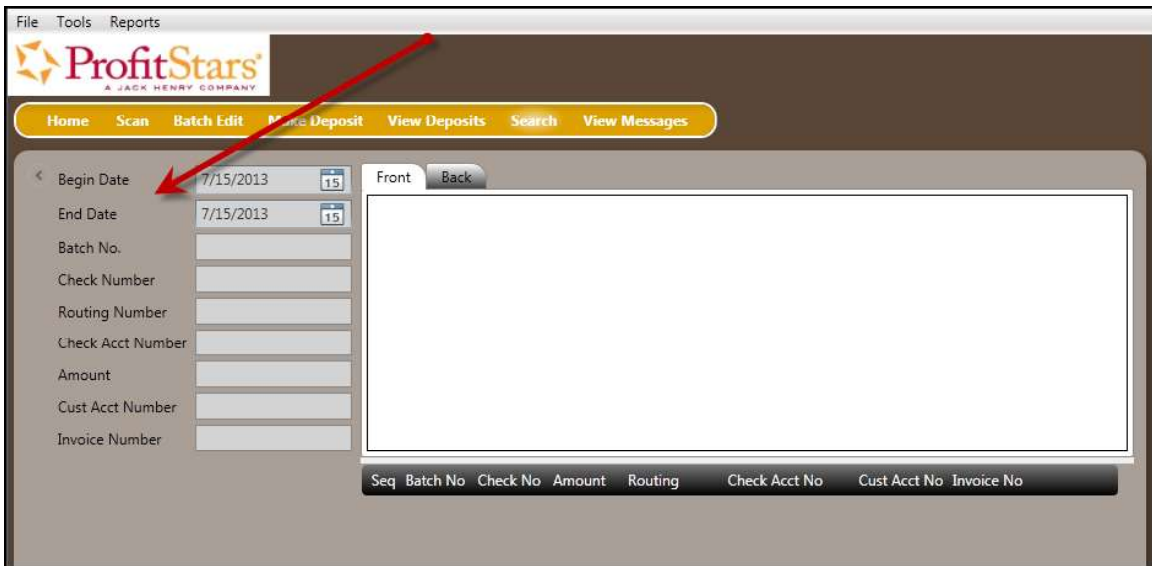


FIGURE 84 - SEARCH CRITERIA

3. Select the **Search** link from the bottom of the page.

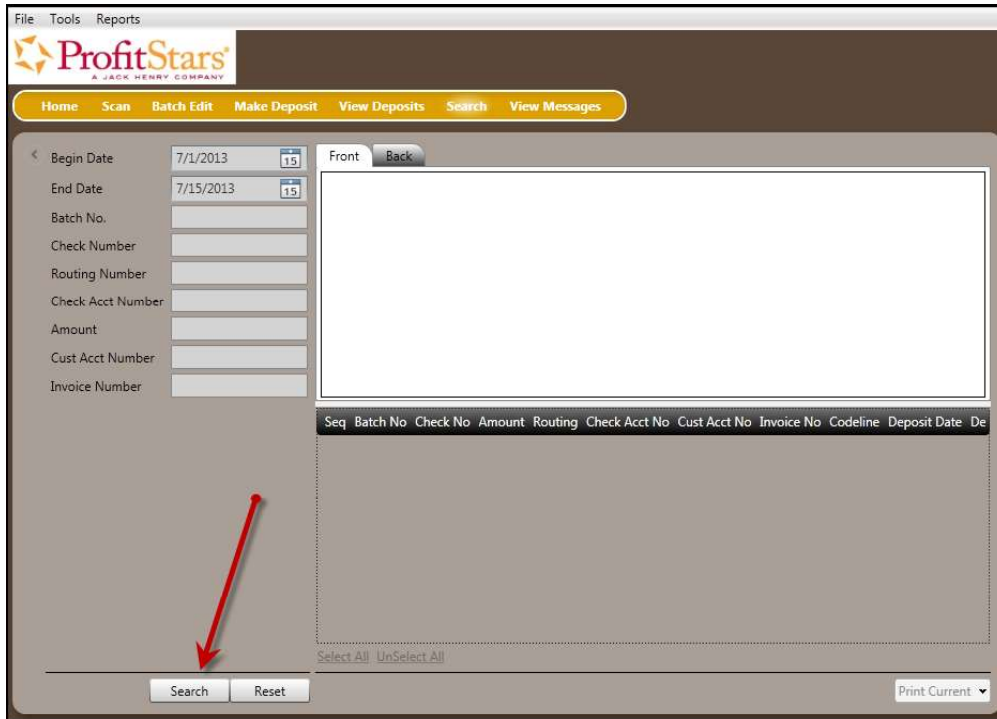


FIGURE 85 - SEARCH LINK

4. The search results appear. Select an item to print, or hold the **Shift** key on your keyboard to highlight multiple items in the list.

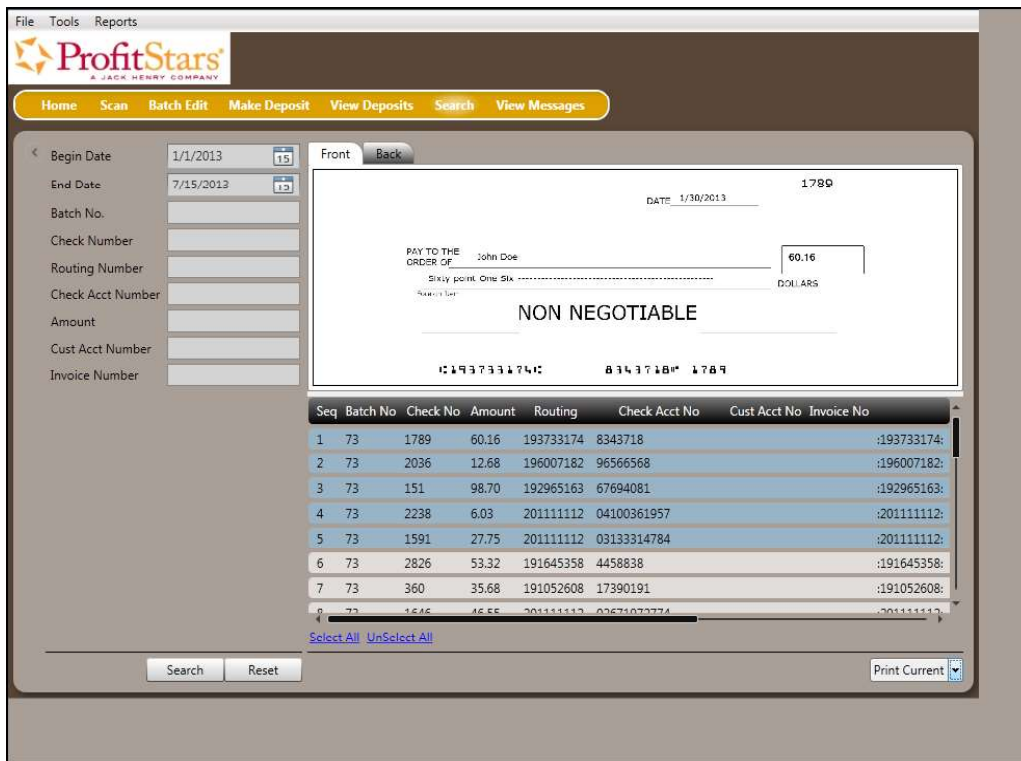


FIGURE 86 - HIGHLIGHTING SEARCH ITEMS

5. Select **Print Current** to print the front and back of a highlighted item. To print the front and back of a range of highlighted items, select the drop-down menu next to *Print Current* and select **Print Selected**.

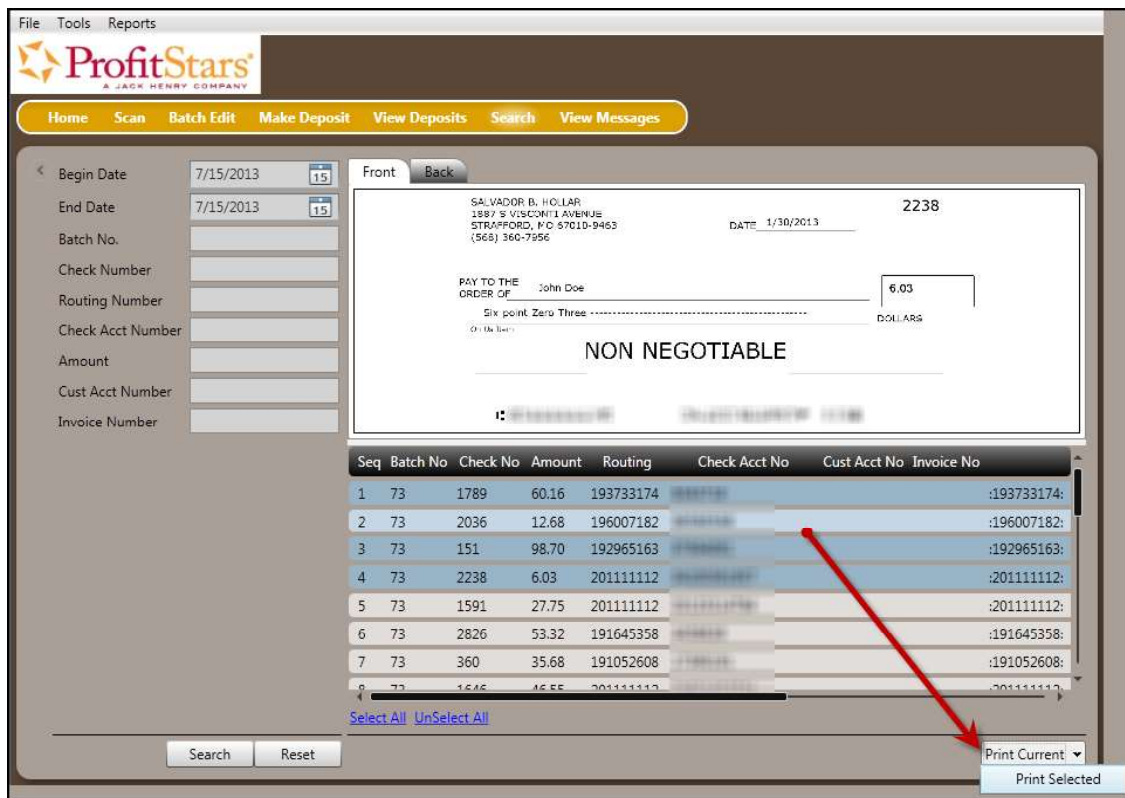


FIGURE 87 - PRINT CURRENT AND PRINT SELECTED OPTIONS

**NOTE:** Any items that are voided in the application (see “Voiding a Transaction” in this document for more information) will not be reflected in the RDN application.

## Application Reporting

### Transaction Status Summary

The *Transaction Status Summary* can be found on the *Dashboard* once you log in to the application. It represents the total number of items and dollar amounts of all ACH, Check 21, credit card debits/credits, refunds, returns, and collection items for all locations being processed by a customer. It covers a rolling 60-day period and is broken down by a transaction’s current status within the system.


Current Transaction Summary 			
This is a summary report of all transactions currently in the system as of 09/09/2016. All times are displayed in Central Time (CT).			
Status	Items	Debits	Credits
Approved			
Processed			
Collected			
Awaiting Capture			
Awaiting Approval			
Declined			
Voided			
Error			
In Collection			
Other ACH Returns			
Unauthorized			
Uncollected NSF			
Suspended			
Disputed			
Invalid / Closed Account			
Resolved			
Other Check21 Returns			

FIGURE 88 - SAMPLE CURRENT TRANSACTION SUMMARY

The *Current Transaction Summary* allows you to quickly identify any unusual activity regarding your transactions with any of the following status types:

- Declined
- Error
- In Collection
- Voided
- Uncollected NSF
- Suspended (requires financial institution’s action to approve or void)
- Disputed
- Invalid/Closed Account

The following table provides a list and definition of all the transaction statuses within the system, for reference.

Status	Definition
Approved	The transaction has been verified and will be processed at the designated cut-off time.
Processed	The transaction has been transmitted to the appropriate network (ACH or Check 21). Changes can no longer be made, and the transaction can no longer be voided.
Collected	<i>(ACH Only)</i> The transaction, originally returned NSF, has been re-presented to the Fed by ProfitStars, and funds were recovered.
Awaiting Capture	Status for credit card transactions only.
Awaiting Approval	The transaction has been verified, but the amount of the transaction exceeded the <i>Dual Authorization</i> limit of the user who created it. An authorized approver must review and then either approve or void the transaction.
Declined	The transaction has been declined by the EPS system and will not be processed. The transaction exceeded either <i>Dual Authorization</i> limits or <i>Velocity</i> limits.
Voided	The transaction has been voided and will not be processed. A transaction may not be voided once the item is in the <i>Processed</i> status.
Error	An internal error has occurred within the EPS system. Contact your first line of support.
In Collection	<i>(ACH Only)</i> The transaction, returned NSF, is in the process of being re-presented to the Fed by ProfitStars.
Other ACH Returns	The ACH transaction has been returned by the Fed. The transaction will be charged back.
Unauthorized	This includes the total number of transactions and total amount that have been returned with one of five Unauthorized Return Reason Codes (R05, R07, R10, R29, R51).  <b>Note:</b> These R codes will no longer be included in the <i>Disputed</i> status totals.
Uncollected NSF	<i>(ACH Only)</i> The transaction was returned to ProfitStars NSF by the Fed, and funds could not be recovered.
Suspended	The transaction has been verified, but it has exceeded <i>Velocity</i> limits.

Status	Definition
Disputed	<i>(ACH Only)</i> The transaction was returned to ProfitStars by the Fed because the account holder at the receiving financial institution has disputed its validity. The transaction will be charged back (reversed).
Invalid/Closed Account	<i>(ACH Only)</i> The transaction was returned to ProfitStars by the Fed because the account number at the receiving financial institution was invalid or because the account was closed.
Resolved	The transaction has been moved into a <i>Resolved</i> status by a user to indicate that no further action related to the transaction is required. Transactions can be moved into a <i>Resolved</i> status from a status of <i>Declined, Voided, Invalid/Closed Account, Disputed, Uncollected NSF, Error, or In Research.</i>
Other Check 21 Returns	The Check21 transaction has been returned by the Fed. The transaction will be charged back.

## Transaction Status Report

A *Transaction Status* report is a pre-defined report listing all transactions within a specific status. It automatically generates when you click a status link from the *Current Transaction Summary*. For example, select **Approved**.

The list will contain items that have been processed within the last 60 days and will give you access to individual transaction information. The report can be printed or saved (exported) into a Microsoft® Office Excel® spreadsheet (.xlsx), a tab-delimited file (.tsv), or a comma-delimited file (.csv).





Current Transaction Summary 			
This is a summary report of all transactions currently in the system as of 09/09/2016. All times are displayed in Central Time (CT).			
Status	Items	Debits	Credits
Approved 			
Processed			
Collected			
Awaiting Capture			
Awaiting Approval			
Declined			
Voided			
Error			
In Collection			
Other ACH Returns			
Unauthorized			
Uncollected NSF			
Suspended			
Disputed			
Invalid / Closed Account			
Resolved			
Other Check21 Returns			

FIGURE 89 - CURRENT TRANSACTION SUMMARY WITH APPROVED OPTION

1. A list of the first 25 (default value) transactions are displayed, although you may navigate through pages of results to locate more transactions. To view details for a transaction, select the **View** link in the far left column for that transaction.

Transactions matching your query  Share to All Users [Save to My Reports](#)

Title

Displaying Page 1 of 1  
Records 1 - 18 of 18






View	Transaction Date	Status	Payment Type	Name On Account	
	12/18/2015 10:24:26 AM CT	Approved	Checking		
	12/18/2015 10:42:20 AM CT	Approved	Checking	Ima Tester	
	12/28/2015 2:10:12 PM CT	Approved	Checking		
	12/30/2015 10:50:00 AM CT	Approved	Checking	James Jones	
	12/30/2015 10:50:00 AM CT	Approved	Checking	James Jones	
Total Debit Count			13	Total Credit Count	5
Total Debit Amount			\$6,177.50	Total Credit Amount	\$73.00

FIGURE 90 - SAMPLE TRANSACTION STATUS REPORT, VIEW INDICATED

- The *Transaction Details* page appears, including the **Show Events** and **Show Audit History** options.

Reports / Results / Transaction Information

Transaction Details Actions

Customer (ID):	Receipt Code:	<input type="button" value="Show Events"/>	<input type="button" value="Hide Events"/>
Effective Date: Monday, December 21, 2015	Tran Data 2:	<input type="button" value="Show Audit History"/>	<input type="button" value="Hide Audit History"/>
Auth Only: \$1.00	Tran Data 3:		
Payment Method: ACH	Reference Number: T:4ZP5PPFFA1		
From Account Type: Checking	Payment Origin: Signature Original		
	Settlement Status: No Settlement Needed		

FIGURE 91 - TRANSACTIONS DETAILS PAGE WITH SHOW EVENTS AND AUDIT HISTORY OPTIONS

## Editing a Transaction

Transactions may be edited by their effective date and/or amounts or voided until they are processed. Once processed at the designated cut-off time, transactions will be deposited as entered. Any edits performed after file transmission will not be reflected in the file *View*, *Audit History*, or *Event History*.

- Log in, and select a status from the *Current Transaction Summary*. For example, click the **Approved** status link.
- Select the **View** link next to the transaction you would like to edit.

- The *Transaction Details* page appears. To edit the amount, select **Edit** next to the *Sale* field.

Reports / Results / Transaction Information

Transaction Details Actions Print Show Events Hide Events

Customer (ID): Jones, James (99007789)	Transaction data 1 Displayed 6 Label Text Field:	Show Audit History	Hide Audit History
Effective Date: Tuesday, January 05, 2016	Transaction data 2 Displayed 7 Label Text Field:		
<b>Sale:</b> \$17.00	transaction data 3 Displayed 8 Label Text Field:		
Payment Method: ACH			
From Account Type: Checking			
Account Number: 122037760 / 4560646556			
To Location: Corporate Office			

FIGURE 92 - TRANSACTION DETAILS PAGE WITH EDIT OPTION

- The **Sale** amount will become a workable field where you can enter a new amount. Enter a new amount and a reason for changing the amount. Select the green check when finished.

Transaction Details

Customer (ID): Jones, James (99007789)

Effective Date: Tuesday, January 05, 2016

\$ 17.00 Reason Reason

FIGURE 93 - REASON FOR EDITING SALE AMOUNT AND EDITING CONFIRMATION OPTIONS

- To change the date the transaction will be processed, select **Edit** next to the *Effective Date* field. Enter the date from the calendar option. Enter a **Reason** for the change and select the green check when finished.



FIGURE 94 - EDITING AN EFFECTIVE DATE

## Voiding a Transaction

1. Log in and select a status from the *Current Transaction Summary* that has not yet been processed. For example, click the **Approved** status link.
2. A report of approved transactions appears. Select the **View** link next to the transaction you would like to void.
3. The *Transaction Details* page appears. Select **Actions | Void**.



FIGURE 95 - VOIDING A TRANSACTION

4. The system will ask you to confirm voiding the transaction. Select **Void**. The transaction will be voided and appear as a *Voided* status on the *Current Transaction Summary* page until it is resolved (see next section).

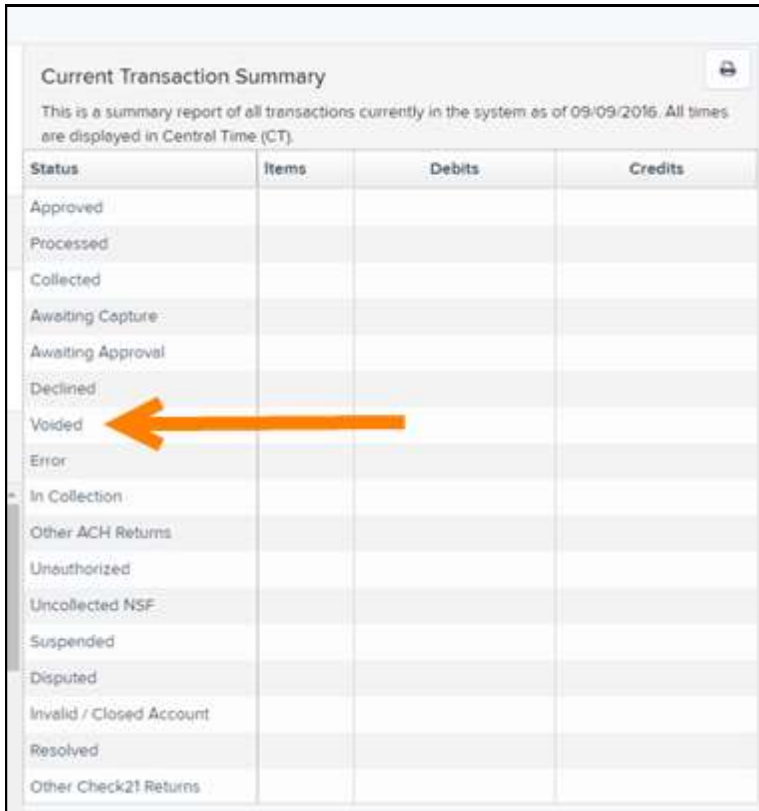


FIGURE 96 - CONFIRM VOID OPTION

## Resolving a Transaction

Resolving a transaction means indicating a reason why the transaction was voided for communication and auditing purposes. Once a transaction has been voided, it will appear in the *Voided* status, where you can opt to resolve the transaction.

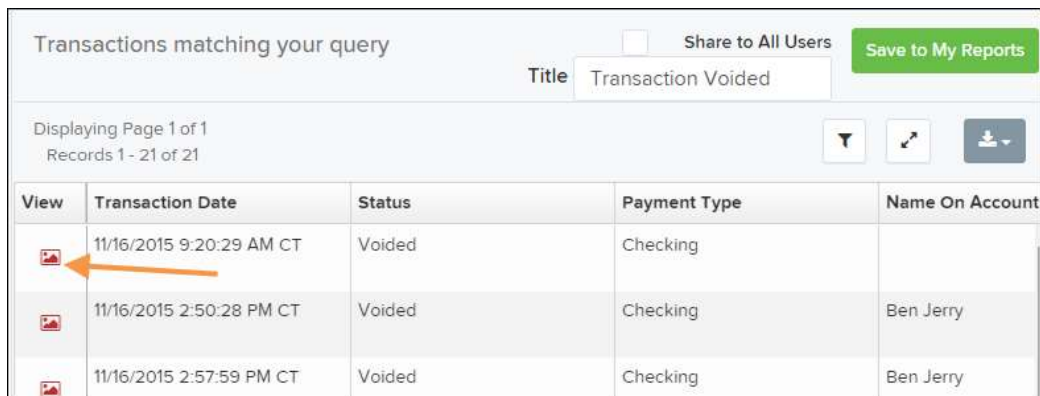
1. Log in to the application and select the **Voided** status from the *Current Transaction Summary* on the *Dashboard* page of the application.



Status	Items	Debits	Credits
Approved			
Processed			
Collected			
Awaiting Capture			
Awaiting Approval			
Declined			
Voided			
Error			
In Collection			
Other ACH Returns			
Unauthorized			
Uncollected NSF			
Suspended			
Disputed			
Invalid / Closed Account			
Resolved			
Other Check21 Returns			

FIGURE 97 - VOIDED STATUS LINK

2. Select the View icon for the transaction you wish to resolve.






View	Transaction Date	Status	Payment Type	Name On Account
	11/16/2015 9:20:29 AM CT	Voided	Checking	
	11/16/2015 2:50:28 PM CT	Voided	Checking	Ben Jerry
	11/16/2015 2:57:59 PM CT	Voided	Checking	Ben Jerry

FIGURE 98 - VIEW ICON

- From the *Transaction Details* page, select **Actions**. Enter a reason for resolving the transaction. For example, the transaction was deposited in the wrong account. Select **Resolve**. The transaction will now appear under the *Resolved* status in the *Current Transaction Summary*.

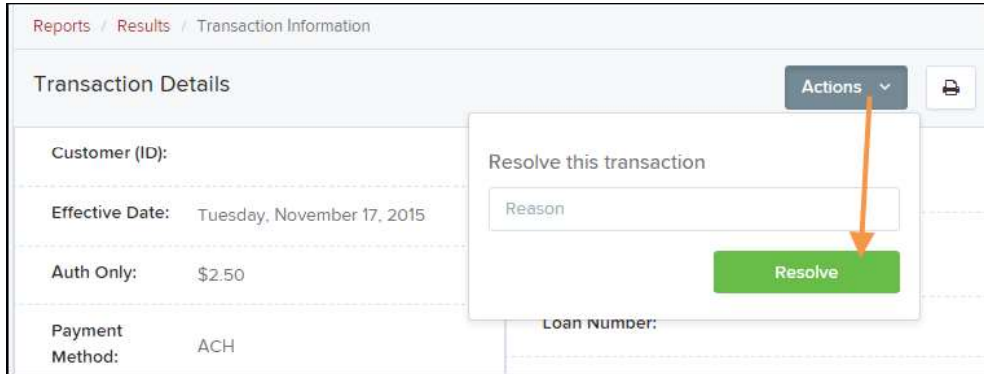


FIGURE 99 - MARK TRANSACTION RESOLVED OPTION

# The Reports Page

The *Reports* tab grants you access to a number of reports available to run.

- **Standard Reports** – Provides a list of reports with pre-set filters to show specific items. For example, the **Show Items Detected as Duplicate Transactions** option generates information about all of the transactions that have been flagged as duplicate items in any number of deposits.

---

**NOTE:** For any Standard Report, the pre-set filters can be customized to fit your needs by altering the report filters.

---

- **My Reports** – Allows you to customize a report based on your informational needs. You may save this report as a template for future use, and it will be available only to your profile as a user.
- **Shared Reports** – Allows you to customize a report and save it as a template available for other users to access and use. Only the person who created this report template can delete it.
- **Credits and Debits to Your Merchant Settlement Account** – Identifies deposits made within a date range and displays individual transaction amounts making up the deposit, with details of each transaction.

# Using the Report Builder Utility

The report builder utility can be used to create one-time queries and custom recurring daily, weekly, and monthly reports for bookkeeping, historical research, and problem solving.

There are two options when creating a customized report: **New Report** and **New Shared Report**. While both are customizable, the shared report is available to other users who have access to the system. Other users will be able to pull the shared report and use its settings to generate information. Only the user who created the shared report can delete it.

1. Log in to the application, and select **Reports** from the left main menu.

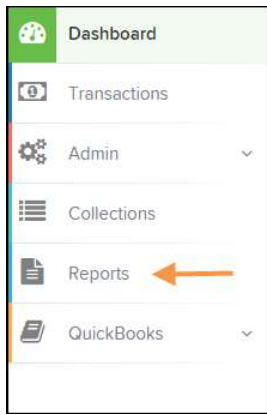


FIGURE 100 - REPORTS TAB

2. Click **New Report** or **New Shared Report**, if it will be available to others.

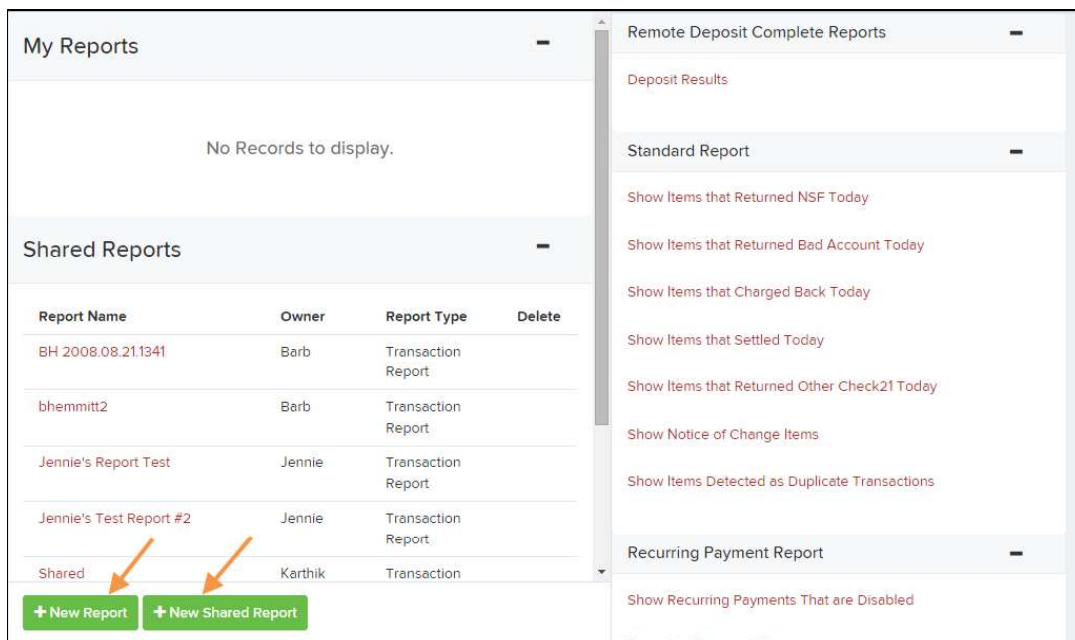


FIGURE 101 - REPORT BUILDER OPTIONS FOR NEW REPORTS



- The *Report* page appears. In the top bar, enter a **Title** for the report. Fill in the report criteria in each of the four sections: *Report Type*, *Date Range*, *Advanced*, and *Report Column* headers.

FIGURE 102 – FOUR SECTIONS IN REPORT BUILDING

- Report Type** - Designate if your report will be a **Transaction Report** based upon the current status of a transaction, or a **Historical Event Report** based upon past events a transaction has been through in the system.
- Date Range** - In the *Date Type* field, select either **Transactions Created** or **Effective Dates** for the report, which will determine if the report displays transactions based upon the date they were created versus the date they took effect.
  - Select a pre-specified date range using the **Export Date Range** option (ideal for recurring reports), or specify your own date range with the **Start Date** and **Start Time** and the **End Date** and **End Time** fields.

FIGURE 103 - DATE RANGE SECTION

---

**NOTE:** If you are creating a *Historical Event Report*, a custom date range will be unavailable.

---

- **Advanced Filters** section, specify the **Location** and **Status** of the transaction you wish to have in your report.
  - **Settlement Status:** Whether a transaction has been deposited. Designate a single status or multiple statuses by selecting the appropriate check box(es).
  - **Origin of Transaction:** Determines how the transaction was received and will be coded. You may designate a single origin for the report or multiple origins by selecting the check box next to each option.
  - **Originated As:** Specifies how the transaction will be processed. You may designate a single type or multiple types.
  - **Account Type:** Determines the type of transaction the report will display. You can select a specific account type or select **ALL**.
  - **Operation:** This option specifies what process a transaction has been through. You may designate one process or select **ALL**.
  - **Authority Response Code:** This option represents the types of return responses that can be received for a transaction. Select a specific response code or select **ALL**.
  - **Amount Range:** The **From** and **To** options allow you to look for transactions with a specific amount or between amount values in decimal format (XX.XX).
- **Report Column Headers** – This section allows you to organize how the report displays.
  - Select the **View** check box next to any fields to have them show on the report.
  - Under *Prioritize*, use the arrows to change the order in which information appears. For example, select the upward arrow to have a field listed before others, or the select the downward arrow to have other fields listed before it.
  - Use *Freeze* to lock fields when viewing a report. This will hold certain fields in view while you explore the rest of the report information.

Report Column Headers			
	View	Prioritize	Freeze
Transaction Date	<input checked="" type="checkbox"/>	▼	<input checked="" type="checkbox"/>
Transaction Status	<input checked="" type="checkbox"/>	▼ ▲	<input checked="" type="checkbox"/>
Payment Type	<input checked="" type="checkbox"/>	▼ ▲	<input checked="" type="checkbox"/>
Name On Account	<input checked="" type="checkbox"/>	▼ ▲	
Transaction ID00	<input checked="" type="checkbox"/>	▼ ▲	
Reference Number	<input checked="" type="checkbox"/>	▼ ▲	
Customer Number	<input checked="" type="checkbox"/>	▼ ▲	
Operation Type	<input checked="" type="checkbox"/>	▼ ▲	
Location Name	<input checked="" type="checkbox"/>	▼ ▲	
Amount	<input checked="" type="checkbox"/>	▼ ▲	

FIGURE 104 - REPORT COLUMN HEADERS SECTION

- At this time, you may choose to select the **Share to All Users** check box if you want to have this report available for other users to view. If you selected **New Shared Report** previously, this box will already be selected.

Alternatively, you may wish to save the report for your own use at a later time by selecting **Save to My Reports**. This option will both save the report and generate a report to view.

Reports / New Report

Title    Share to All Users

FIGURE 105 - SAVE AND RUN REPORT OPTIONS

The report displays results.

- Use the filters to change the report and select **Run Reports** again, or you can print/export the report, as needed.
- Column headers in the report are selectable for organization. Select a column header to organize the report based on that column's information, in either ascending order (designated by an upward arrow) or descending order (designated by a downward arrow).
- Select **View** to the left of an item to view more details about the transaction.
- To change the report template, adjust the report filters as desired, and select **Save to My Reports**, which will save the filter options as a template for later use.

---

**NOTE:** Be sure to select the **Share to All Users** check box if you wish to save the report for others to use.

---

## Additional Reports

For information on additional reports available to you, please review the *User Reports Handbook*.